

ALLEGRO BUS

2008

2008 SPECIFICATIONS

TIFFIN MOTORHOMES

Allegro Bus

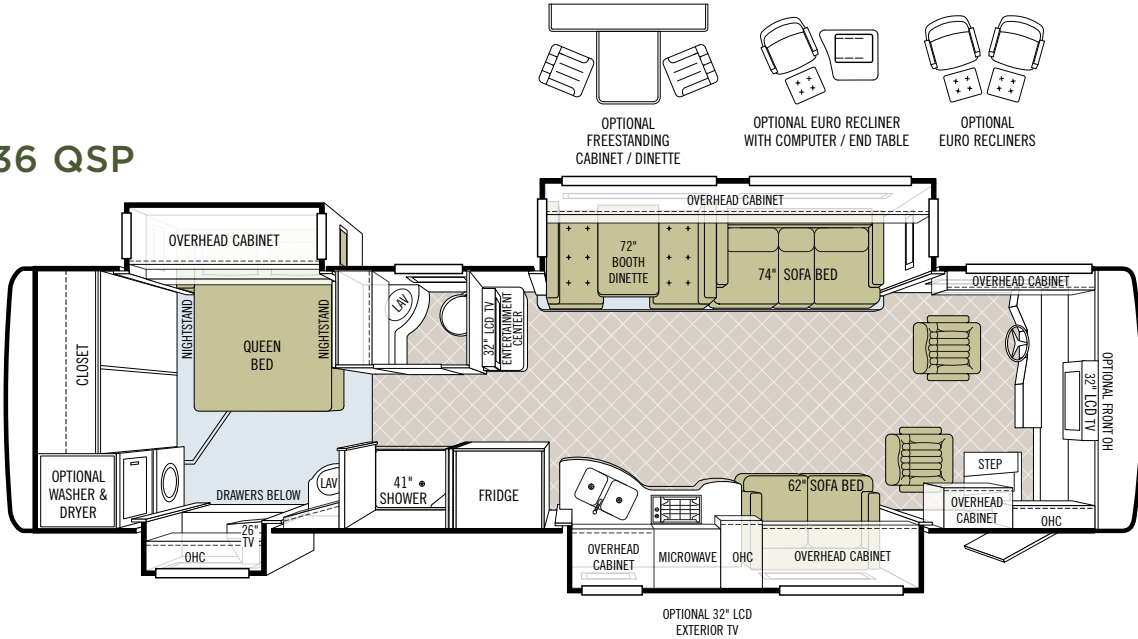


TIFFIN MOTORHOMES

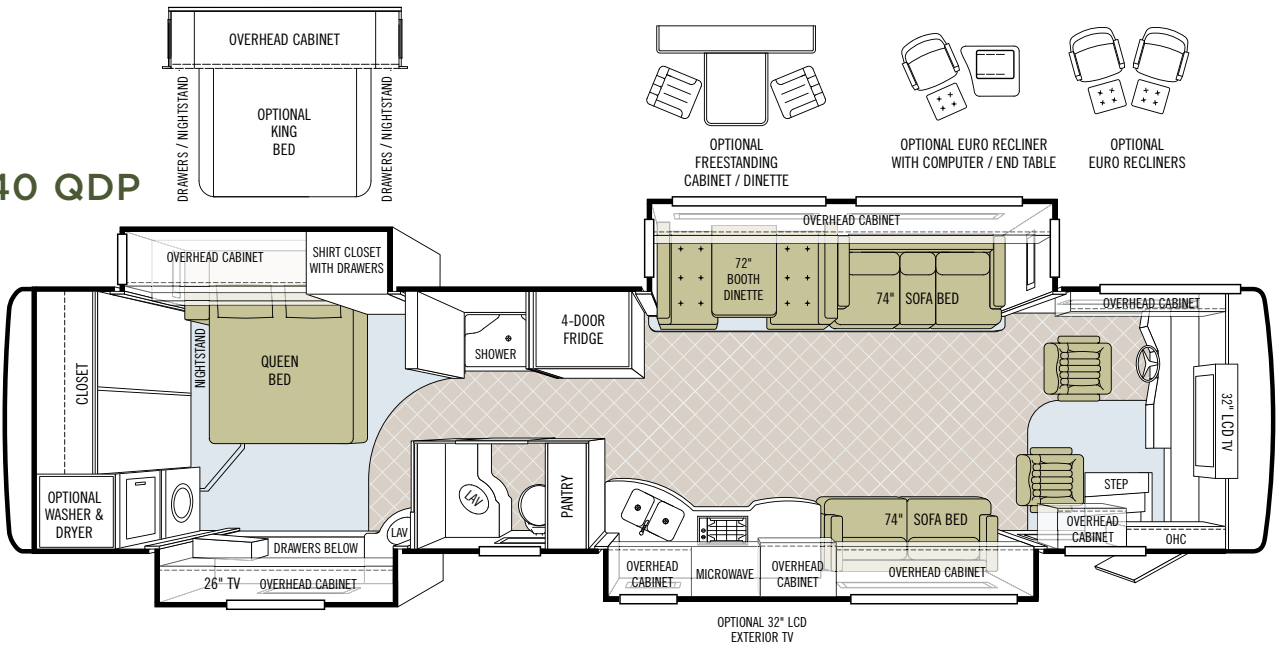
WHEREVER YOU GO, WE GO.

INTERIOR SPECS
FLOOR PLANS

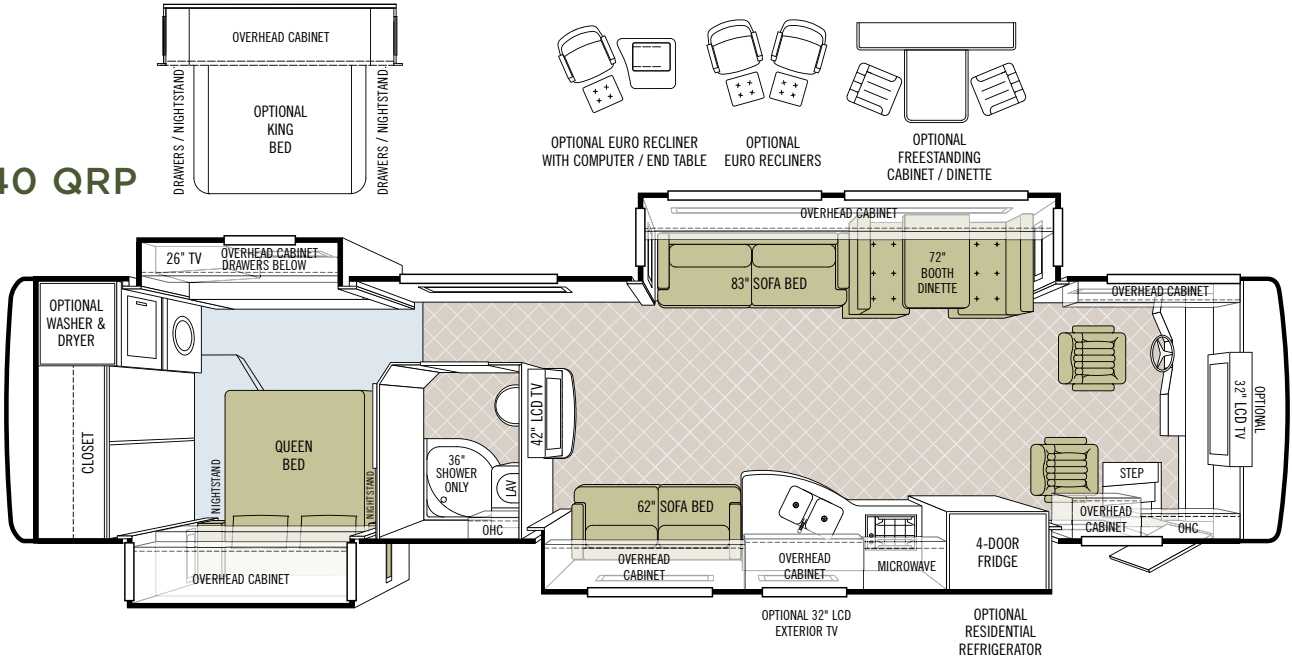
36 QSP



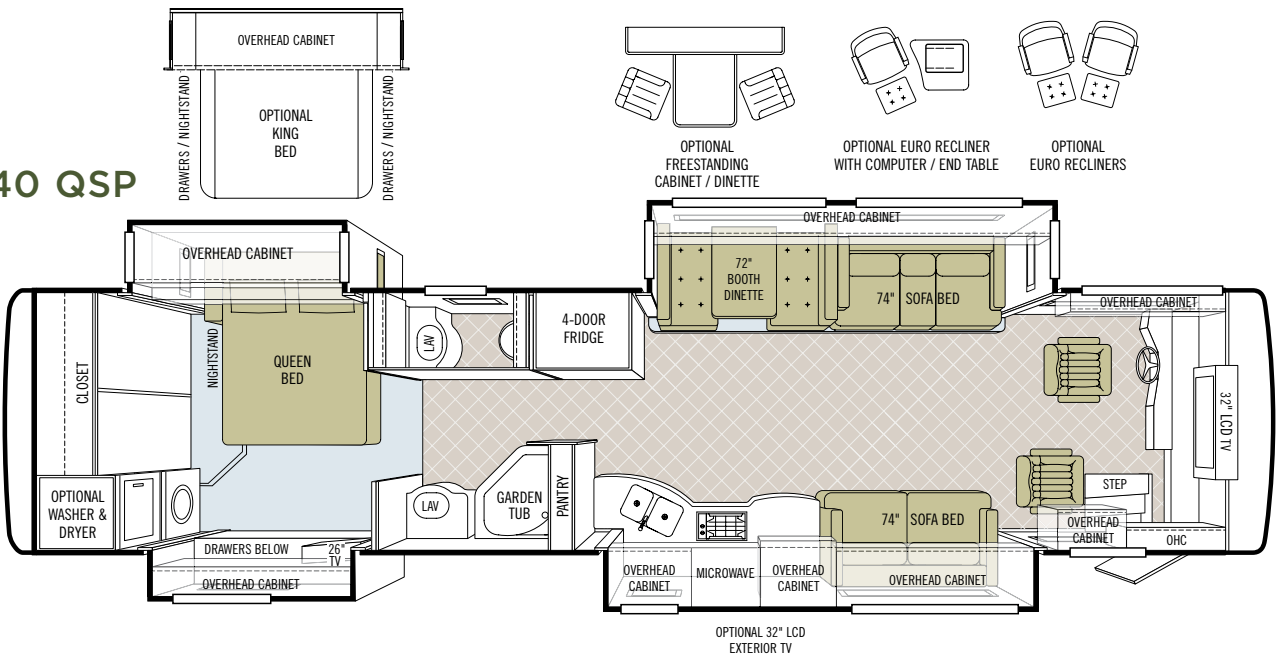
40 QDP



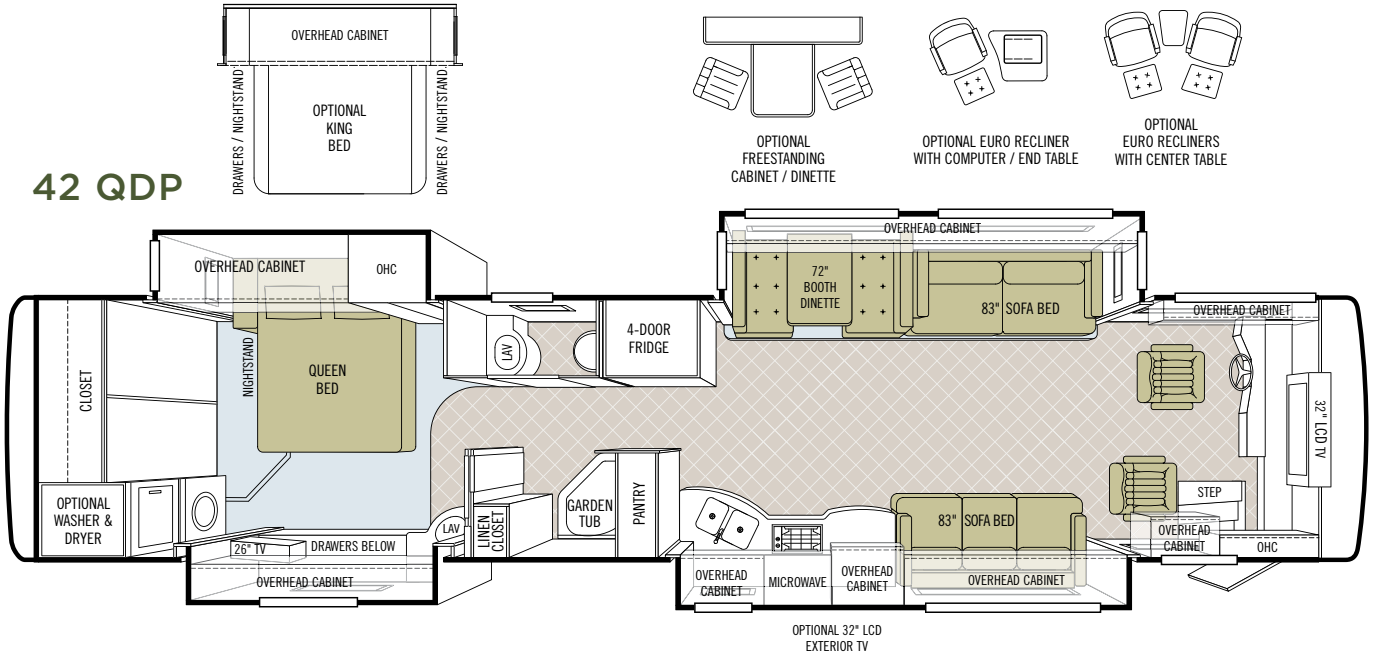
40 QRP



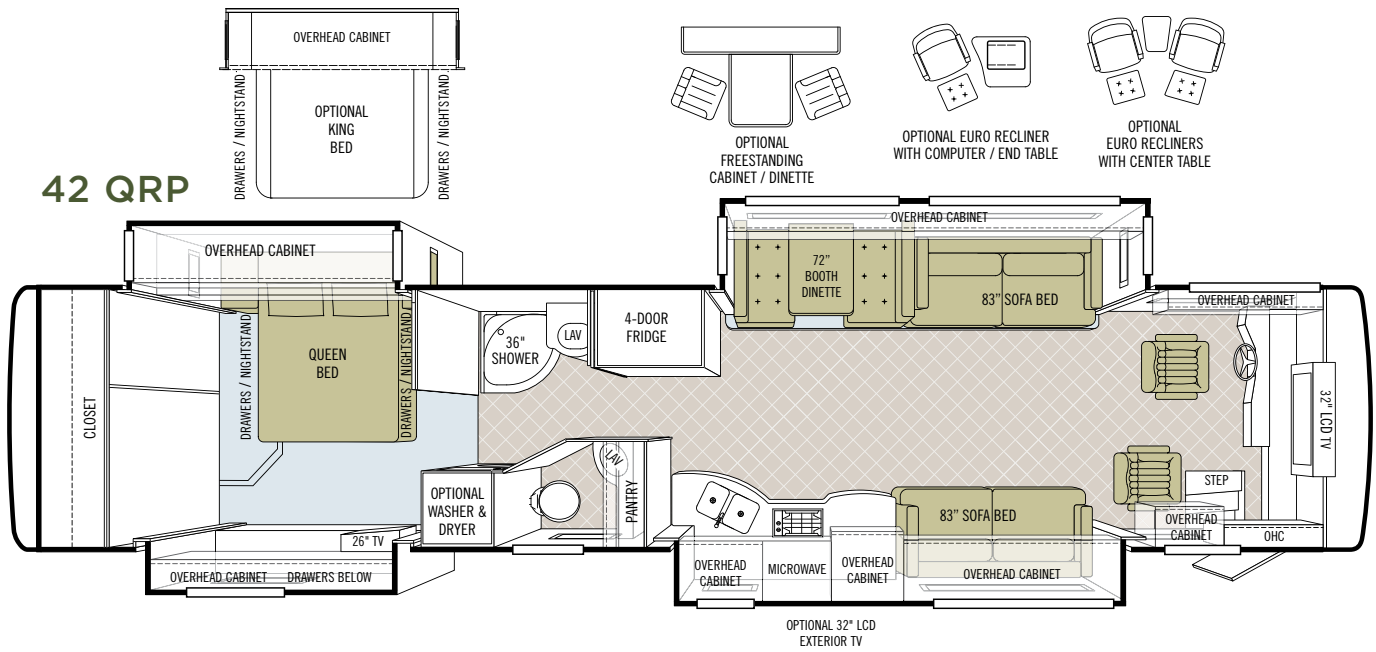
40 QSP



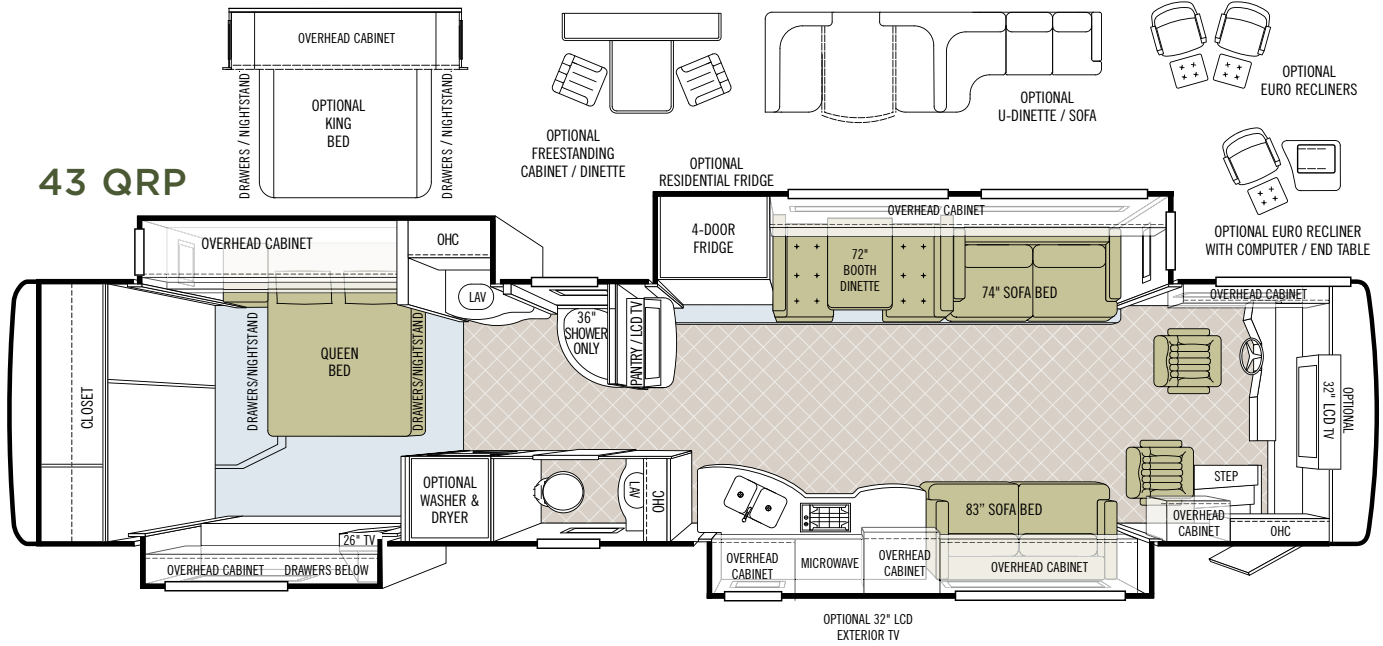
42 QDP



42 QRP



43 QRP



ALLEGRO BUS

EXTERIOR SPECS PAINT COLORS



GOLD CORAL Full Body



MAROON CORAL Full Body



NASA Full Body



SILVER SAND Full Body



SUNLIT SAND Full Body

**INTERIOR SPECS
CABINETS & FABRICS**

CABINET DOORS

All cabinet doors are made of solid wood.



Natural Cherry



Cherry



Natural Maple

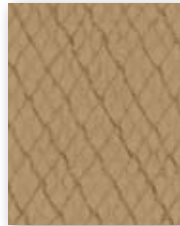


Cherry Bark

MONTE CARLO



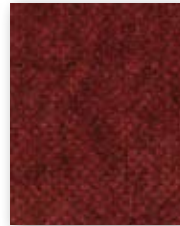
Bedroom



Bedroom Accent



Sofa/Chair



Living Area Accent



Dinette

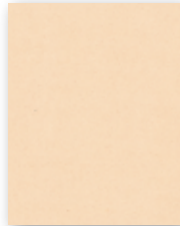


Carpet

OASIS



Bedroom



Bedroom Accent



Sofa/Chair



Living Area Accent



Dinette



Carpet

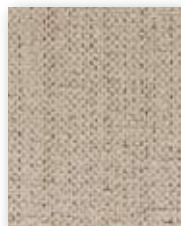
SUMMER WIND



Bedroom



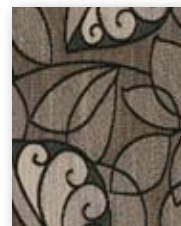
Bedroom Accent



Sofa/Chair



Living Area Accent



Dinette



Carpet

Our fabric designs and choices of wood grain are sure to suit every taste.
All cabinet finishes are available in combination with all fabric schemes.

TECHNICAL SPECS

AUTOMOTIVE

STANDARD EQUIPMENT ON ALL MODELS:

- Allison 3000 MH 6-Speed Auto with Lock-up (Torque Converter)
- Cummins ISL Engine
- Side Mounted Radiator
- Two-Stage Compression Engine Brake
- Cast Aluminum Wheels
- Air Ride (4 Air Bags) 36' & 40'
- Air Ride (6 Air Bags) 42' & 43'
- ABS Brakes
- Fully Automatic Leveling Jacks
- Cruise Control
- Tilt Steering Column
- Emergency Start Switch
- Adjustable Gas & Brake Pedals
- Independent Front Suspension

FREIGHTLINER / SPARTAN CHASSIS	36 QSP	40 QDP	40 QRP	40 QSP	42 QDP	42 QRP	43 QRP
GVWR (Freightliner Chassis)	NA	34,500	34,500	34,500	44,500	44,500	44,500
GVWR (Spartan Chassis)	NA	34,600	34,600	34,600	44,600	44,600	44,600
GAWR – Front (Freightliner Chassis)	NA	14,500	14,500	14,500	14,500	14,500	14,500
GAWR – Front (Spartan Chassis)	NA	14,600	14,600	14,600	14,600	14,600	14,600
GAWR – Rear	NA	20,000	20,000	20,000	20,000	20,000	20,000
GAWR – Tag Axle	NA	NA	NA	NA	10,000	10,000	10,000
GCWR (Freightliner Chassis)	NA	44,500	44,500	44,500	54,500	54,500	54,500
GCWR (Spartan Chassis)	NA	44,600	44,600	44,600	54,600	54,600	54,600
UVW	NA	24,820	24,820	24,820	31,200	31,200	31,580
Alternator Amps	NA	160	160	160	160	160	160
Trailer Hitch Capacity	NA	10,000	10,000	10,000	10,000	10,000	10,000
Fuel Tank (Gallons) - Dual Fuel Fill	NA	150	150	150	150	150	150

POWERGLIDE CHASSIS	36 QSP	40 QDP	40 QRP	40 QSP	42 QDP	42 QRP	43 QRP
GVWR	35,600	35,600	35,600	35,600	NA	NA	NA
GAWR – Front	14,600	14,600	14,600	14,600	NA	NA	NA
GAWR – Rear	21,000	21,000	21,000	21,000	NA	NA	NA
GCWR	45,600	45,600	45,600	45,600	NA	NA	NA
UVW	28,980	30,160	30,160	30,160	NA	NA	NA
Alternator Amps	160	160	160	160	NA	NA	NA
Trailer Hitch Capacity	10,000	10,000	10,000	10,000	NA	NA	NA
Fuel Tank (Gallons) - Dual Fuel Fill	150	150	150	150	NA	NA	NA

OVERALL	36 QSP	40 QDP	40 QRP	40 QSP	42 QDP	42 QRP	43 QRP
Overall Length – Approximately	36' 11"	40' 4"	40' 9"	40' 4"	42' 6"	42' 6"	43' 6"
Overall Height with Roof Air (Maximum)	12' 7"	12' 7"	12' 7"	12' 7"	12' 7"	12' 7"	12' 7"
Interior Height	84"	84"	84"	84"	84"	84"	84"
Overall Width	101"	101"	101"	101"	101"	101"	101"
Interior Width	96"	96"	96"	96"	96"	96"	96"
Fresh Water (Gallons)	90	90	90	90	90	90	90
Black Water (Gallons)	46	46	46	46	46	46	46
Grey Water (Gallons)	70	70	70	70	70	70	70
LPG Tank (Gallons; can only be filled to 80% capacity)	35	35	35	35	24	24	24
Minimum Garage Height	13'	13'	13'	13'	13'	13'	13'
Basement Storage (Cubic Feet - Approximate)	105	145	145	145	125	125	125

STRUCTURAL

STANDARD EQUIPMENT ON ALL MODELS:

- Laminated Floor, Sidewall & Roof
- Steel / Aluminum Reinforced Structure

EXTERIOR

STANDARD EQUIPMENT ON ALL MODELS:

- Fiberglass Front & Rear Caps
- Dual Fuel Fills
- Full Body Paint
- Large One-piece Tinted Windshield
- 17.5" Heated Chrome Power Mirrors with Remote Adjustment
- Single Motor Intermittent Wiper
- Undercoating
- Fog Lights
- Deadbolt Entrance Door
- 30" Wide Entry Door
- Keyless Entry Door System
- Double Electric Step
- Dual Pane Tinted Windows
- Exterior Patio Light on Driver's Side
- Exterior Patio Light on Passenger's Side
- Electric Door Awning
- Electric Patio Awning
- Window Awning Package
- Slide-out Awnings with Metal-wrapped Covers
- Pass-thru Basement Storage
- Swing-out Exterior Storage Doors
- Single Handle Lockable Storage Door Latches
- Heated Water & Holding Tank Compartments
- Docking Lights
- Luggage Compartment Lights
- Auto Generator Start
- Four House Batteries
- Gas/ Electric Refrigerator
- 2000 Watt Inverter
- Custom Full-width Mud Flap
- 50-Amp Service
- Power Cord Reel - 50 Amp
- Park Telephone Ready
- Cable Ready TV
- Black Holding Tank Flush System
- 110 V Exterior Receptacle
- Exterior Rinse Hose with Soap Dispenser & Paper Towel Holder
- Molded Fiberglass Roof Cap
- Spotlight with Remote
- Air Horns
- Automatic Satellite Dish
- TV Antenna with Booster
- CB Radio Antenna
- Power Fantastic® Roof Vent with 3-Speed Fan
- Roof Ladder
- Color Back-up Camera
- Water Filter
- Quiet A/C Roof-ducted System

EXTERIOR CONTINUED

	36 QSP	40 QDP	40 QRP	40 QSP	42 QDP	42 QRP	43 QRP
Storage Compartment Slideout Tray (1 or 2)	0	0	0	0	0	0	0
In-Motion Low Profile HD Satellite Dish	0	0	0	0	0	0	0
Exterior 32" LCD HD TV	0	0	0	0	0	0	0
Onan® 7500 Generator	S	S	S	S	NA	NA	NA
Onan® 10,000 Generator	NA	NA	NA	NA	S	S	S
Three 13,500 BTU Low Profile Roof Air Conditioners with Heat Pump	NA	NA	NA	NA	S	S	S
Two 15,000 BTU Low Profile Roof Air Conditioners with Heat Pump	S	S	S	S	NA	NA	NA
Electric Jacks	S	S	S	S	NA	NA	NA
HWH Hydraulic Jack	0	0	0	0	S	S	S
Power Solar Shade Integrated in Awning	0	0	0	0	0	0	0
Diamond Shield® Front Cap Protective Coating	0	0	0	0	0	0	0
High Definition TV Antenna	0	0	0	0	0	0	0

DRIVER'S COMPARTMENT

STANDARD EQUIPMENT ON ALL MODELS:

- Entry Floor Light
- 12 V Disconnect Switch
- Padded Dash
- Lighted Instrument Panel
- Adjustable Fuel/ Brake Pedals
- Power Ultra Leather Driver Seat (Flexsteel®)
- Ultra Leather Passenger Seat with Power Footrest (Flexsteel®)
- Passenger Seat Console Box with Built-in Magazine Rack
- Side-view Cameras Activated by Turn Signals
- Full Width Power Windshield Shade
- Fire Extinguisher
- 18" VIP Smart Steering Wheel
- Dual Dash Fans
- Slide-out Drawer in Dash
- 12 V / 110 V / Phone Jack Receptacle
- Driver / Passenger Side Window Solar / Privacy Shades
- Windshield Privacy Shades
- Beverage Tray

	36 QSP	40 QDP	40 QRP	40 QSP	42 QDP	42 QRP	43 QRP
Handheld CB Radio	0	0	0	0	0	0	0
Sirius® Radio (Requires Subscription)	0	0	0	0	0	0	0
Rearview Mirror with Compass and Outside Temperature Display	0	0	0	0	0	0	0
Computer Navigational System	0	0	0	0	0	0	0
32" LCD Front Overhead TV	0	S	0	S	S	S	0

LIVING AREA/DINETTE

STANDARD EQUIPMENT ON ALL MODELS:

- Booth Dinette with Solid Surface Tabletop
- 12 V Receptacle & Phone Jack at Dinette
- Full Tile Living Room
- Power Window on Driver's Side

	36 QSP	40 QDP	40 QRP	40 QSP	42 QDP	42 QRP	43 QRP
Freestanding Dinette with Solid Surface Tabletop with Built-in Cabinet	0	0	0	0	0	0	0
42" LCD TV/Entertainment Center in Living Area	NA	NA	S	NA	NA	NA	NA
32" LCD TV/Entertainment Center in Living Area	S	NA	NA	NA	NA	NA	S

PASSENGER'S SIDE

	36 QSP	40 QDP	40 QRP	40 QSP	42 QDP	42 QRP	43 QRP
Ultra Leather DE Sofa Bed	S-62*	S-74*	S-62*	S-74*	S-83*	S-83*	S-83*
Cloth DE Sofa Bed	NA	0-74*	0-62*	0-74*	0-83*	0-83*	0-83*

DRIVER'S SIDE

	36 QSP	40 QDP	40 QRP	40 QSP	42 QDP	42 QRP	43 QRP
Cloth Flexsteel® DE Sofa Bed	S-74*	S-74*	S-83*	S-74*	S - 83*	S - 83*	S - 74*
Ultra Leather Flexsteel® DE Sofa Bed	0	0	0	0	0	0	0
Ultra Leather Air Coil® Hide-a-bed	0	0	0	0	0	0	0
Cloth Air Coil® Hide-a-bed	0	0	0	0	0	0	0
Two Ultra Leather Euro Recliners with Center Table	NA	NA	NA	NA	0	0	NA
Two Ultra Leather Euro Recliners (Only Available with Freestanding Dinette)	0	0	0	0	NA	NA	0
Cloth Magic Bed *	0	0	0	0	0	0	0
Ultra Leather Magic Bed *	0	0	0	0	0	0	0
Ultra Leather Euro Recliner with Computer / End Table *	0	0	0	0	0	0	0

*In the Place of Furniture that Comes Standard

KITCHEN

STANDARD EQUIPMENT ON ALL MODELS:

- Polished Solid Surface Countertops
- Solid Surface Sink Covers with Storage Racks
- Expand-an-island
- 2½" Deep Lighted Toe Kick
- 4-Door Stainless Steel Refrigerator with Ice Maker
- Single Lever Sink Faucet with Built-in Sprayer
- Residential Double Bowl Stainless Steel Sink
- Stainless Steel Convection Microwave
- 2-Burner Glass Cooktop
- Galley Soap Dispenser
- Above Floor Galley Slide-out
- Sink & Stove Cover Racks (Underneath the Sink)

	36 QSP	40 QDP	40 QRP	40 QSP	42 QDP	42 QRP	43 QRP
3-Burner Cooktop with Gas Oven (NA with Dishwasher)	0	0	0	0	0	0	0
Dishwasher (Drawer type)	NA	0	0	0	0	0	0
Residential Refrigerator with Extra 1000 Watt Sine Wave Inverter Plus Additional 2 House Batteries	0	NA	0	NA	NA	0	0
Black Glazed Hutch	0	0	0	0	0	0	0
Cocoa Glazed Hutch	0	0	0	0	0	0	0

BATH

STANDARD EQUIPMENT ON ALL MODELS:

- Two Medicine Cabinets with Vanity Lights
- Solid Surface Vanity Top & Bowl
- Skylight in Shower
- Electric Flush Toilet

	36 QSP	40 QDP	40 QRP	40 QSP	42 QDP	42 QRP	43 QRP
Linen Closet Above Toilet	NA	NA	S	NA	S	NA	NA
Fiberglass Molded Garden Tub	NA	NA	NA	S	S	NA	NA
Fiberglass Molded Shower	S	S	S	NA	NA	S	S
Curved Shower Enclosure & Door	NA	NA	S	NA	NA	S	S

BEDROOM

STANDARD EQUIPMENT ON ALL MODELS:

- Innerspring Pillow-top Mattress
- Bed Comforter with Throw Pillows
- Solid Wood and Fabric Headboard
- Solid Surface Nightstand Tops
- Cedar-lined Wardrobe
- 26" LCD TV
- DVD/Satellite Receiver Cabinet and Wiring
- Laundry Hamper
- Carbon Monoxide Detector
- LPG Leak Detector

	36 QSP	40 QDP	40 QRP	40 QSP	42 QDP	42 QRP	43 QRP
Select Comfort Mattress (60" Queen)	0	0	0	0	0	0	0
Select Comfort Mattress (72" King)	NA	0	0	0	0	0	0

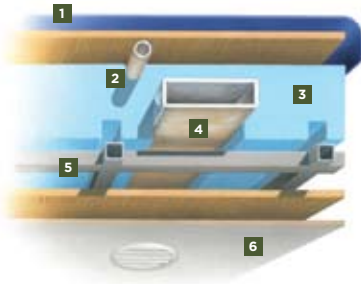
GENERAL INTERIOR

STANDARD EQUIPMENT ON ALL MODELS:

- 7' Ceilings
- Soft Touch Vinyl Ceiling
- Raised Panel Cabinet Doors
- Soft Cloth Covered Cabinet Shelves
- Recessed Ceiling Lighting
- 12 V Fluorescent Lights
- Enclosed Surround Sound Speakers
- Plumbed for Washer/Dryer with Cabinet
- Fantastic® 3-Speed Fan
- Tank Level Monitor System
- Smoke Detector
- Central Vacuum Cleaner
- Air Driven Step Well Cover
- Wall-to-wall Carpeting in Bedroom
- Blackout Day/Night Shades in Bedroom
- Ceramic Tile Flooring in Kitchen, Bath, Entrance Landing & Living Room
- 10-Gal DSI Gas/ Electric Water Heater (NA on 42 QDP)
- Complete HD Ready System (HD Satellite Receivers Required)
- Complete Cable Wiring Interfacing with Surround Sound & Satellite Receiver
- Solar Shade and Blackout Shades on All Windows (Except Galley, Water Closet, & Bedroom)

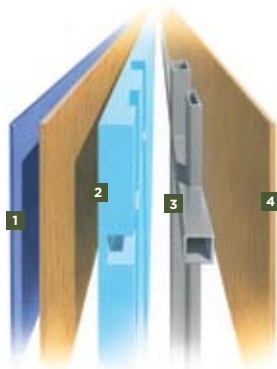
	36 QSP	40 QDP	40 QRP	40 QSP	42 QDP	42 QRP	43 QRP
Combo Washer / Dryer	0	0	0	0	0	0	0
Stacked Washer / Dryer	0	0	0	0	0	0	0
Hydronic Heating System	0	0	0	0	S	S	S
Two 30,000 BTU Ducted Furnaces	S	S	S	S	NA	NA	NA
3000 Watt Sine Wave Inverter IPO 2000 Watt Modified Sine	0	0	0	0	0	0	0

CONSTRUCTION SPECS



ROOF

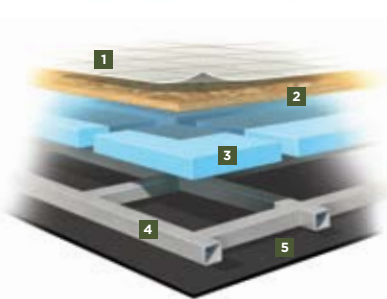
1. One-piece, moisture resistant molded fiberglass roof cap provides insulation and strength and prevents water intrusion
2. A/C Condensation Drainage System that runs internally through the roof insulation and down the sidewalls, redirecting water underneath the motorhome
3. 5 1/2" high-performance thermal insulation
4. Quiet Air Cooling System with return air and cooling exhaust ducts foil-wrapped to deflect UV rays and repel heat
5. Durable, tubular steel roof skeleton
6. Easy-to-clean soft touch vinyl ceiling panel



SIDEWALL

1. Gel-coat fiberglass outside wall panel
2. High-performance thermal insulation
3. Durable, yet lightweight, tubular aluminum wall skeleton
4. Decorative inside wall panel

All sidewalls are approximately 2" thick.



FLOOR

1. Tile flooring bonded to high-impact oriented strand board
2. High-level engineered oriented strand board
3. High-performance thermal insulation
4. Durable, tubular steel floor skeleton
5. Woven moisture barrier material

10-YEAR UNITIZED CONSTRUCTION LIMITED WARRANTY The structural integrity of the entire coach is guaranteed for the next 10 years. Warranty includes wall separation and inner frame weakness.

5-YEAR "HYDRA-VAC" LAMINATION LIMITED WARRANTY We guarantee against all exterior fiberglass delamination or wall separation.

TIFFIN MOTORHOMES, INC. 105 2ND STREET NW RED BAY, AL 35582
 CALL 256.356.8661 FAX 256.356.8219
 FOR PARTS AND SERVICE CALL 256.356.0261

For more specifics on what makes a Tiffin Motorhome, go to tiffinmotorhomes.com

The following names are registered trademarks of Tiffin Motorhomes: Open Road®, Phaeton®, Allegro®, Allegro Bay®, Allegro Bus®, Zephyr®, Roughing It Smoothly®, and Pusher®.