

PHAETON

2008

2008 SPECIFICATIONS

TIFFIN MOTORHOMES

Phaeton

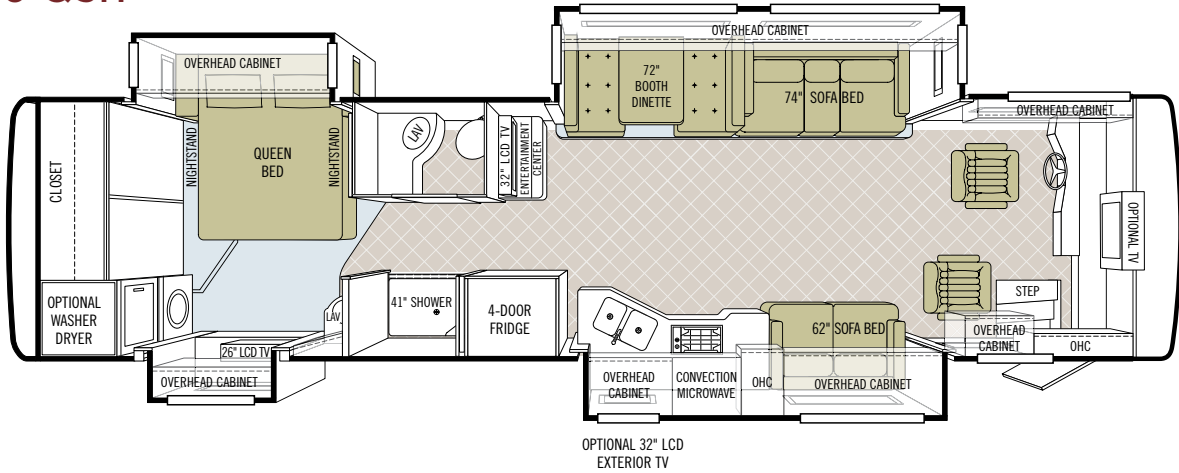


TIFFIN MOTORHOMES

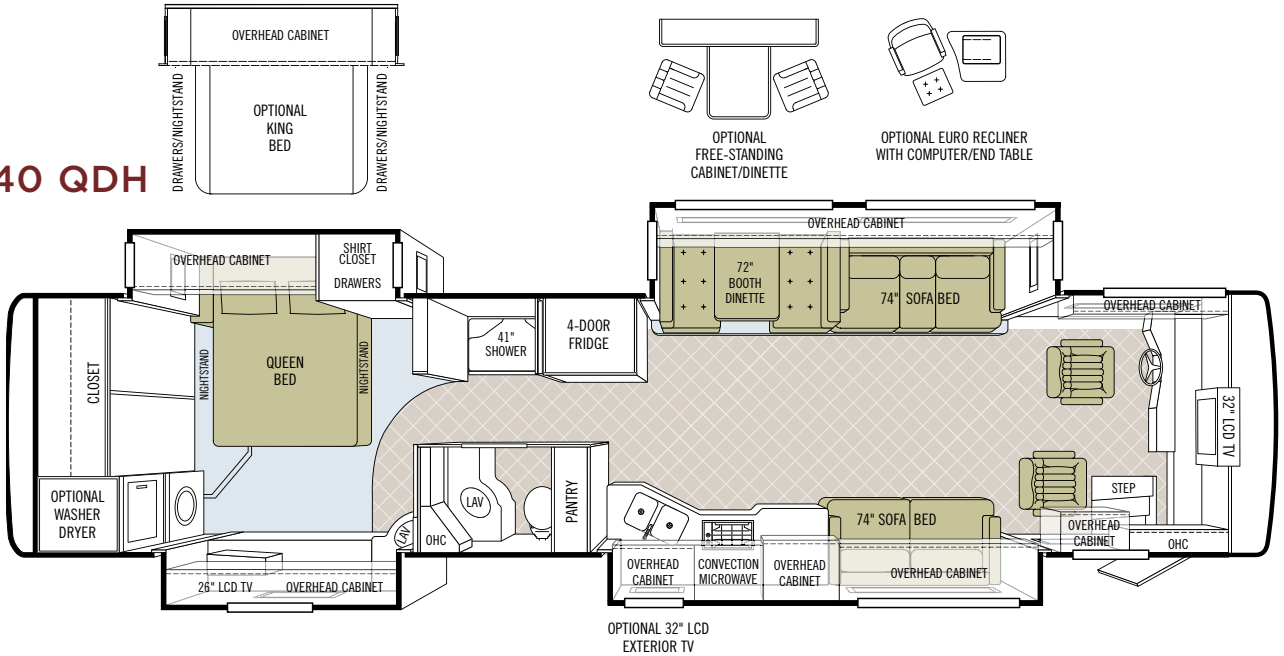
WHEREVER YOU GO, WE GO.

INTERIOR SPECS
FLOOR PLANS

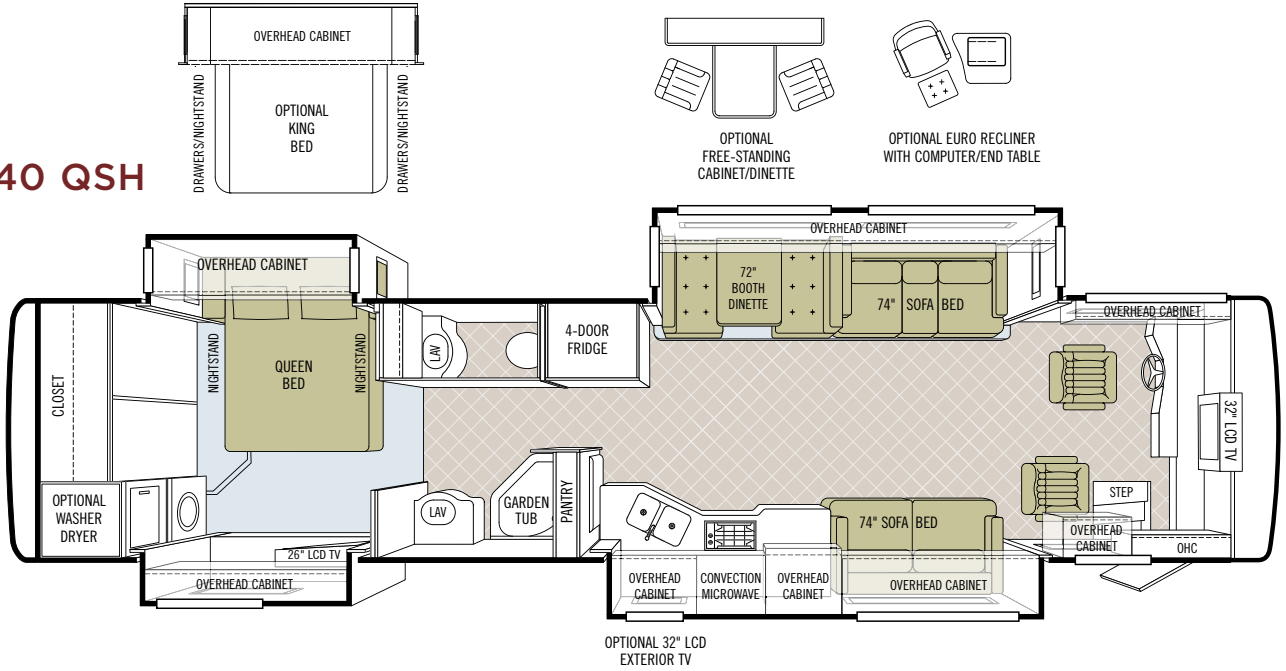
36 QSH



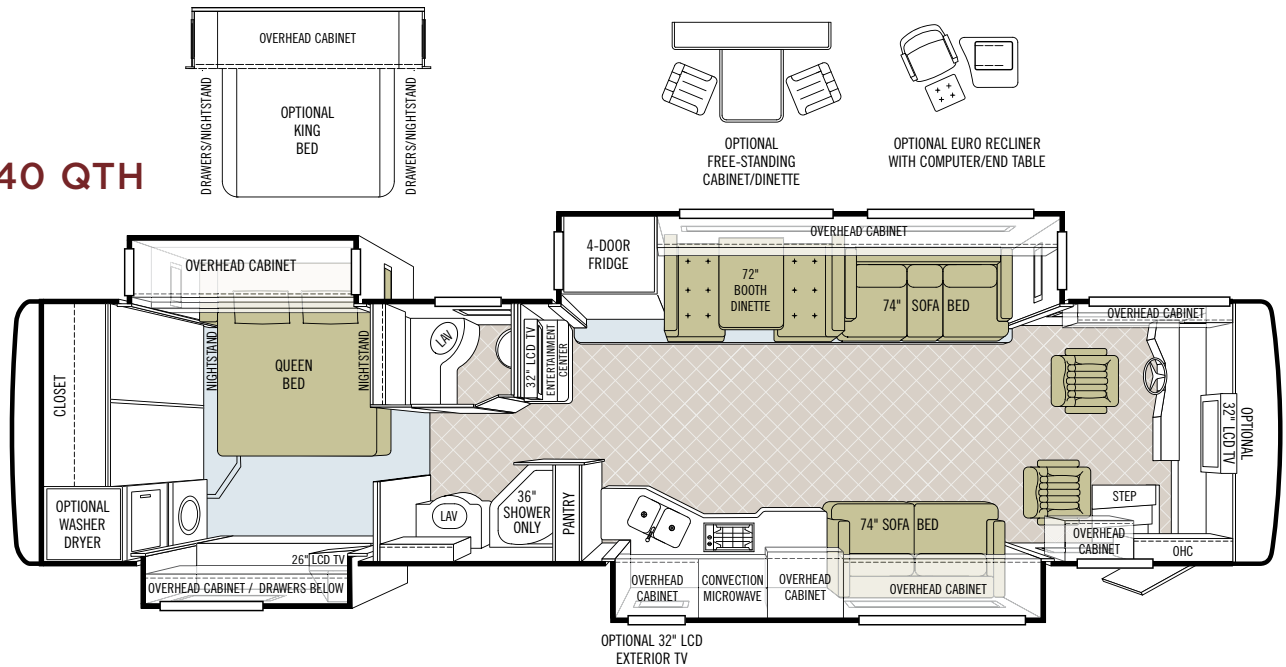
40 QDH



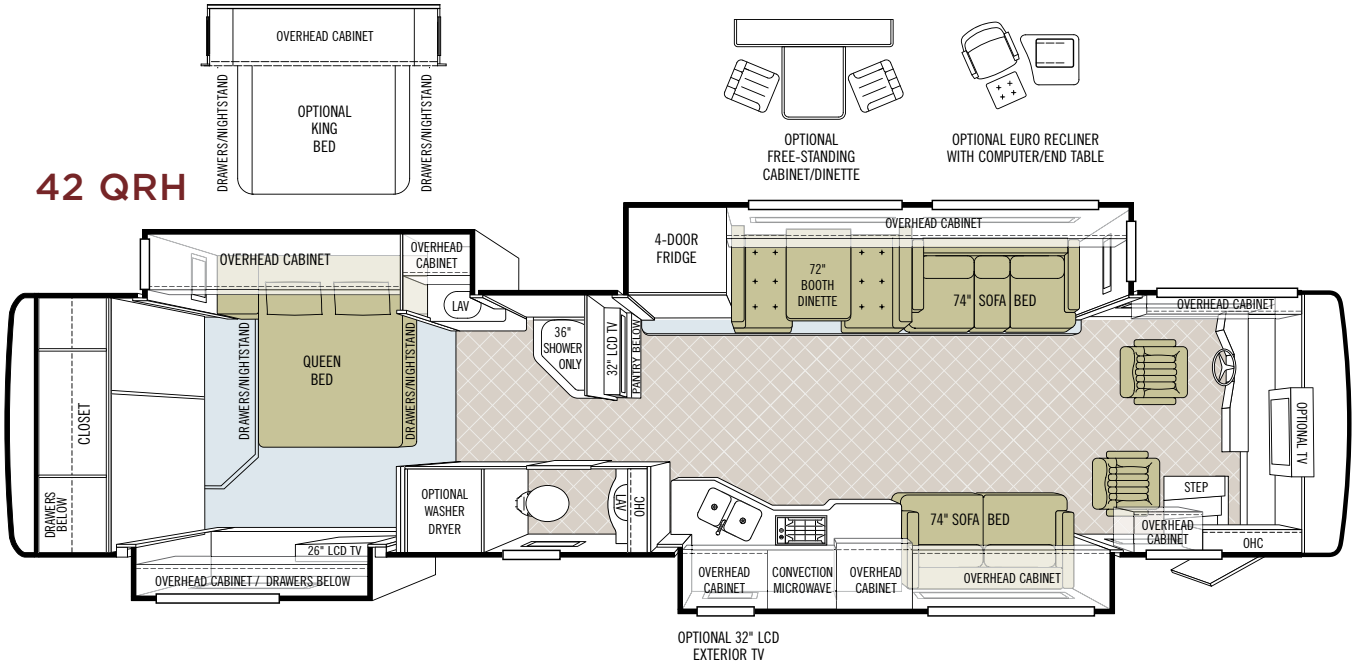
40 QSH



40 QTH



42 QRH



EXTERIOR SPECS
PAINT COLORS



NASA Full Body



SILVER SAND Full Body



SUNLIT SAND Full Body

**INTERIOR SPECS
CABINETS & FABRICS**

CABINET DOORS

All cabinet doors are made of solid wood.



Natural Maple



Cherry Bark



Medium Alderwood



Carpet

KONA



Bedroom



Bedroom Accent



Sofa/Chair



Living Area Accent

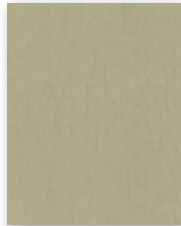


Dinette

LAGUNA



Bedroom



Bedroom Accent



Sofa/Chair



Living Area Accent



Dinette

PATINA



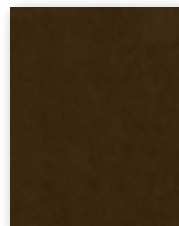
Bedroom



Bedroom Accent



Sofa/Chair



Living Area Accent



Dinette

Our fabric designs and choices of wood grain are sure to suit every taste.
All cabinet finishes are available in combination with all fabric schemes.

TECHNICAL SPECS

AUTOMOTIVE

STANDARD EQUIPMENT ON ALL MODELS:

- Raised Rail Chassis Frame
- Adjustable Fuel & Brake Pedals
- 55" Wheel Cut
- VIP 18" Steering Wheel
- Air Ride (4 Air Bags)
- Allison 3000 MH 6-speed Automatic Transmission with Lock-up
- Fog Lights
- Cruise Control
- Air Brakes with Automatic Slack Adjusters & ABS
- Daytime Running Lights
- Emergency Start Switch

CHASSIS	36 QSH	40 QDH	40 QSH	40 QTH	42 QRH
Freightliner Cummins ISC 360 HP / 1050 lb. Torque	S	S	S	S	NA
Spartan Cummins ISC 8.3-liter Engine 360 HP / 1050 lb. Torque	NA	NA	NA	NA	S
GVMR	32,000	32,000	32,000	32,000	42,600
GAWR – Front	12,000	12,000	12,000	12,000	12,600
GAWR – Rear	20,000	20,000	20,000	20,000	20,000
GAWR – Tag Axle	NA	NA	NA	NA	10,000
GCWR	42,000	42,000	42,000	42,000	52,600
Alternator Amps	170	170	170	170	160
Wheel Base	228	266	266	266	296
Exhaust Brake	S	S	S	S	NA
Two-Stage Engine Compression Brake	NA	NA	NA	NA	S
Tire Size	275/80R22.5	275/80R22.5	275/80R22.5	275/80R22.5	275/80R22.5
Trailer Hitch Capacity	10,000	10,000	10,000	10,000	10,000
Fuel Tank (Gallons) - Dual Fuel Fill	100	100	100	100	100
Aluminum Wheels	O	O	O	O	S

OVERALL

	36 QSH	40 QDH	40 QSH	40 QTH	42 QRH
Overall Length – Approximately	36' 9"	40' 5"	40' 5"	40' 5"	42' 5"
Overall Height with Roof Air (Maximum)	12' 7"	12' 7"	12' 7"	12' 7"	12' 7"
Interior Height	84"	84"	84"	84"	84"
Overall Width	101"	101"	101"	101"	101"
Interior Width	96"	96"	96"	96"	96"
Fresh Water (Gallons)	90	90	90	90	90
Black Water (Gallons)	45	45	45	45	45
Grey Water (Gallons)	70	70	70	70	70
LPG Tank (Gallons; can only be filled to 80% capacity)	35.7	35.7	35.7	35.7	35.7
Minimum Garage Height	13'	13'	13'	13'	13'

STRUCTURAL

STANDARD EQUIPMENT ON ALL MODELS:

- Laminated Floor, Sidewall & Roof
- Steel/ Aluminum Reinforced Structure
- One-Piece Fiberglass Roof Cap

EXTERIOR

STANDARD EQUIPMENT ON ALL MODELS:

- Fiberglass Front & Rear Caps
- Exterior Patio Light
- Roof Ladder
- 110 v Exterior Receptacle
- Dual Fuel Fills
- Manual Door Awning
- Docking Lights
- 110 v/ 12 v Converter
- Large Tinted One-Piece Windshield
- Automatic Patio Awning
- Heated Water & Holding Tank Compartments
- TV Antenna
- Heated Power Mirrors with Remote Adjustment
- Slide-Out Awning(s)
- Four 6 v Auxiliary Batteries
- Power Fantastic® Roof Vent with 3-Speed Fan
- Single Motor Intermittent Wiper
- Wheel Liners
- Park Telephone Ready
- A/C Condensation Drains
- Gel-Coat Fiberglass Walls
- Custom Mud Flap
- Black Tank Flush System
- Back-Up Camera
- Full Body Paint
- Exterior Swing-Out Storage Doors with Gas Shocks
- Water Filter
- Cable Ready TV
- Deadbolt Front Entrance Door
- Single Handle Lockable Storage Door Latches
- Undercoating
- Double Electric Step
- Lighted Exterior Storage
- 2000 Watt Inverter with 100-Amp Converter & Transfer Switching
- Dual Pane Windows

EXTERIOR CONTINUED

	36 QSH	40 QDH	40 QSH	40 QTH	42 QRH
Spotlight	0	0	0	0	0
Automatic Door Awning	0	0	0	0	0
Window Awning Package (Two Windows)	0	0	0	0	0
Aluminum Wheels	0	0	0	0	S
Exterior Slide-Out Storage Tray	0	0	0	0	0
Hadley Air Horns	0	0	0	0	0
In-Motion Satellite Dish (HD Ready)	0	0	0	0	0
Automatic Satellite Dish (HD Ready)	0	0	0	0	0
Exterior 32" LCD TV	0	0	0	0	0
Side Cameras Activated with Turn Signals	0	0	0	0	0
Chrome Mirrors	0	0	0	0	0
7.5 kw Onan® Manual Slide-Out Generator	S	S	S	S	NA
10.0 kw Onan® Manual Slide-Out Generator	NA	NA	NA	NA	S
Atwood Electric Automatic Leveling Jacks	S	S	S	S	NA
HWH Hydraulic Jacks	0	0	0	0	S
Two 15,000 BTU Low Profile Roof Air Conditioners with Heat Pump	S	S	S	S	NA
Three Low Profile Roof Air Conditioners with Heat Pump	NA	NA	NA	NA	S

DRIVER'S COMPARTMENT

STANDARD EQUIPMENT ON ALL MODELS:

- Flexsteel® Ultra Leather Power Driver & Passenger Seats with Foot Rest
- Padded Dash
- Custom Infared Repeater
- Dual Dash Fans
- Snack / Beverage Tray with Drawers
- Dual 12 v Dash Receptacle
- Single CD Player & AM/FM Stereo
- Back-Up Color Monitor
- Fire Extinguisher
- Full-Width Power Windshield Shade
- Windshield Privacy Shades
- Driver / Passenger Side Window Solar / Privacy Shades
- Computer Slide-Out Tray in Dash

	36 QSH	40 QDH	40 QSH	40 QTH	42 QRH
Sirius® Radio (Requires Subscription)	0	0	0	0	0
Computer Navigational System	0	0	0	0	0
32" LCD Front Overhead TV	0	S	S	0	0

LIVING AREA/DINETTE

STANDARD EQUIPMENT ON ALL MODELS:

- Booth Dinette with Laminate Tabletop & Solid Surface Edging

	36 QSH	40 QDH	40 QSH	40 QTH	42 QRH
Free-Standing Dinette with Built-in Cabinets	0	0	0	0	0
32" LCD TV in Entertainment Center	S	NA	NA	S	S

PASSENGER'S SIDE

	36 QSH	40 QDH	40 QSH	40 QTH	42 QRH
Ultra Leather DE Sofa Bed	S-74"	S-74"	S-74"	S-74"	S-74"
Cloth DE Sofa Bed	S-62"	O-74"	O-74"	O-74"	O-74"

DRIVER'S SIDE

	36 QSH	40 QDH	40 QSH	40 QTH	42 QRH
Cloth DE Sofa Bed	S-74"	S-74"	S-74"	S-74"	S-74"
Cloth Air Coil® Hide-a-Bed	0	0	0	0	0
Ultra Leather Air Coil® Hide-a-Bed	0	0	0	0	0
Ultra Leather DE Sofa Bed	0	0	0	0	0
Ultra Leather Magic Bed	0	0	0	0	0
Cloth Magic Bed	0	0	0	0	0
Leather Euro Recliner with Computer End Table	0	0	0	0	0

KITCHEN

STANDARD EQUIPMENT ON ALL MODELS:

- Solid Surface Countertop with Stainless Steel Sink
- Sink & Stove Cover Racks (Underneath Sink)
- 4-Door Refrigerator with Ice Maker
- 3-Burner Cooktop
- Solid Surface Sink & Stove Covers
- Single Lever Sink Faucet with Sprayer
- Built-in Soap Dispenser
- Convection Microwave

	36 QSH	40 QDH	40 QSH	40 QTH	42 QRH
Gas Oven	0	0	0	0	0
Expand-an-Island	S	S	S	S	S

BATH

STANDARD EQUIPMENT ON ALL MODELS:

- Medicine Cabinet with Vanity Light
- Solid Surface Vanity Top & Bowl
- Glass Shower Surround
- 3-Speed Fantastic® Fan
- Skylight in Shower
- Custom Raised Panel Bath Door
- Glass Shower Door

	36 QSH	40 QDH	40 QSH	40 QTH	42 QRH
Fiberglass Molded Garden Tub	NA	NA	S	NA	NA
Fiberglass Molded Shower	S	S	NA	S	S

BEDROOM

STANDARD EQUIPMENT ON ALL MODELS:

- Wardrobe
- Under Bed Storage
- 26" LCD TV
- LPG Leak Detector
- Bed Comforter with Throw Pillows
- Pillow Top Mattress
- Carbon Monoxide Detector
- Chest of Drawers with Laundry Hamper

	36 QSH	40 QDH	40 QSH	40 QTH	42 QRH
King Bed Mattress	NA	0	0	0	0
Select Comfort (Dual Control) Bed System – Queen	0	0	0	0	0
Select Comfort (Dual Control) Bed System – King	NA	0	0	0	0

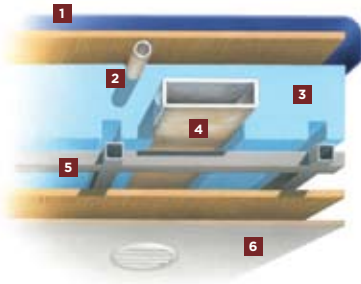
GENERAL INTERIOR

STANDARD EQUIPMENT ON ALL MODELS:

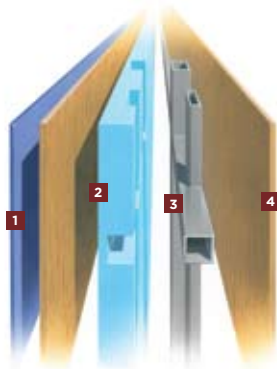
- 7' Ceilings
- Complete Cable Wiring Interfacing with Surround Sound & Satellite Receivers
- 12 v Disconnect Switch
- Soft Touch Vinyl Ceiling
- Home Theatre Sound System with Concealed Speakers
- Fantastic® Power Roof Vents with 3-Speed Fans
- Ceramic Tile Floor in Kitchen, Living Area, Bath & Entry Landing
- Medium Alderwood Cabinetry
- Tank Level Monitor System
- Carpeting in Bedroom & Driver's Compartment with Scotchgard®
- Day/Night Pleated Shades
- Smoke Detector
- Raised Panel Hardwood Cabinet Doors & Drawers
- 12 v Fluorescent Lights
- 10-Gallon Gas/Electric Water Heater
- Complete HD Ready System (HD Satellite Receivers Required)
- Air Driven Step Well Cover

	36 QSH	40 QDH	40 QSH	40 QSH	42 QRH
Natural Maple Cabinetry (Simulated)	0	0	0	0	0
Cherry Bark Cabinetry (Simulated)	0	0	0	0	0
Combo Washer / Dryer	0	0	0	0	0
Stacked Washer / Dryer	0	0	0	0	0
Central Vacuum Cleaner	0	0	0	0	0
Two Ducted Furnaces (One 30,000 BTU & One 35,000 BTU)	S	S	S	S	S

CONSTRUCTION SPECS

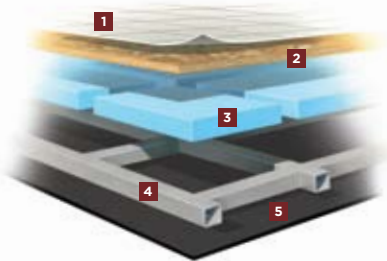
**ROOF**

1. One-piece, moisture resistant molded fiberglass roof cap provides insulation and strength and prevents water intrusion
2. A/C Condensation Drainage System that runs internally through the roof insulation and down the sidewalls, redirecting water underneath the motorhome
3. 5 1/2" high-performance thermal insulation
4. Quiet Air Cooling System with return air and cooling exhaust ducts foil-wrapped to deflect UV rays and repel heat
5. Durable, tubular steel roof skeleton
6. Easy-to-clean soft touch vinyl ceiling panel

**SIDEWALL**

1. Gel-coat fiberglass outside wall panel
2. High-performance thermal insulation
3. Durable, yet lightweight, tubular aluminum wall skeleton
4. Decorative inside wall panel

All sidewalls are approximately 2" thick.

**FLOOR**

1. Tile flooring bonded to high-impact oriented strand board
2. High-level engineered oriented strand board
3. High-performance thermal insulation
4. Durable, tubular steel floor skeleton
5. Woven moisture barrier material

10-YEAR UNITIZED CONSTRUCTION LIMITED WARRANTY The structural integrity of the entire coach is guaranteed for the next 10 years. Warranty includes wall separation and inner frame weakness.

5-YEAR "HYDRA-VAC" LAMINATION LIMITED WARRANTY We guarantee against all exterior fiberglass delamination or wall separation.

TIFFIN MOTORHOMES, INC. 105 2ND STREET NW RED BAY, AL 35582
 CALL 256.356.8661 FAX 256.356.8219
 FOR PARTS AND SERVICE CALL 256.356.0261

For more specifics on what makes a Tiffin Motorhome, go to tiffinmotorhomes.com