

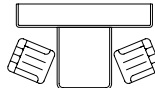
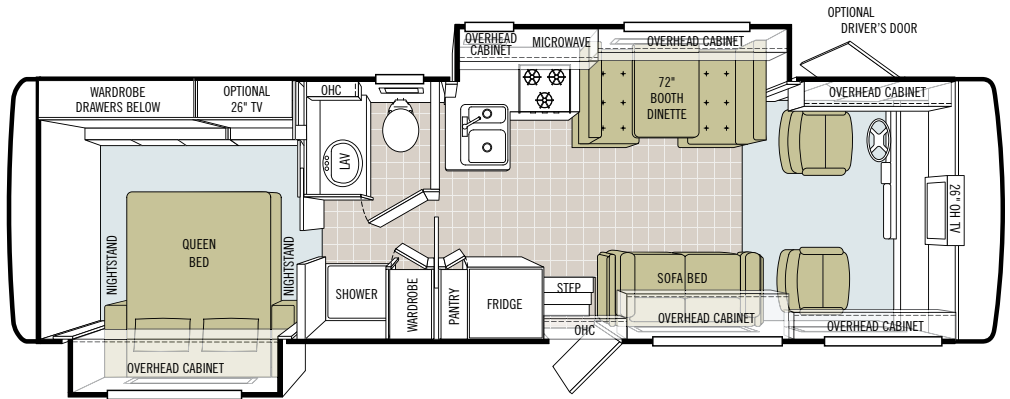


TIFFIN MOTORHOMES

THE 2009 *Allegro*

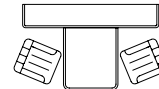
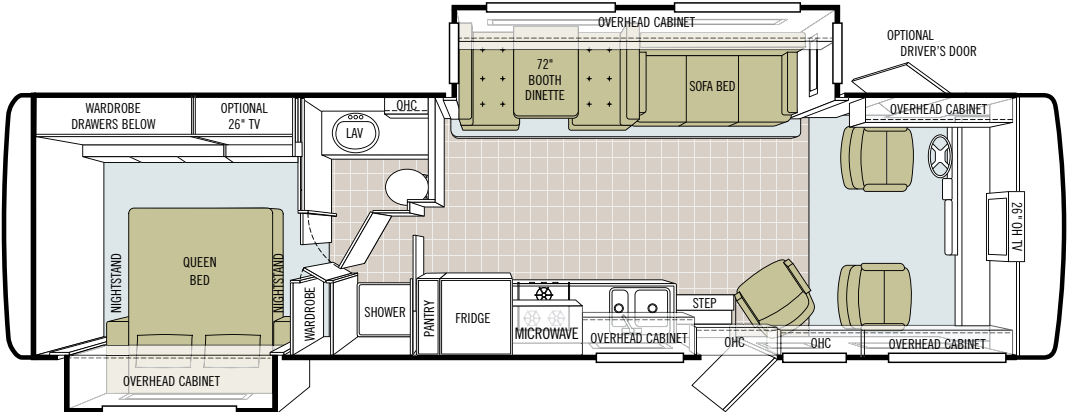
SPECIFICATIONS

30 DA



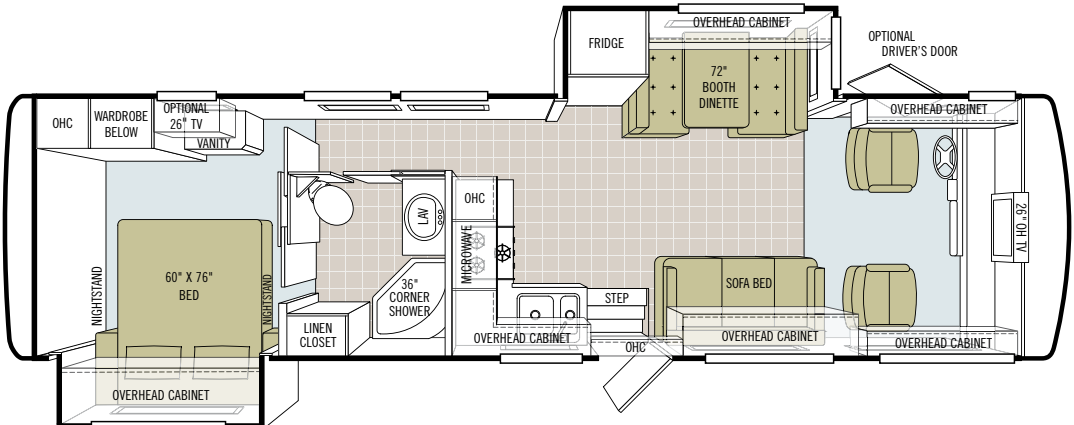
OPTIONAL FREESTANDING CABINET/DINETTE

32 BA

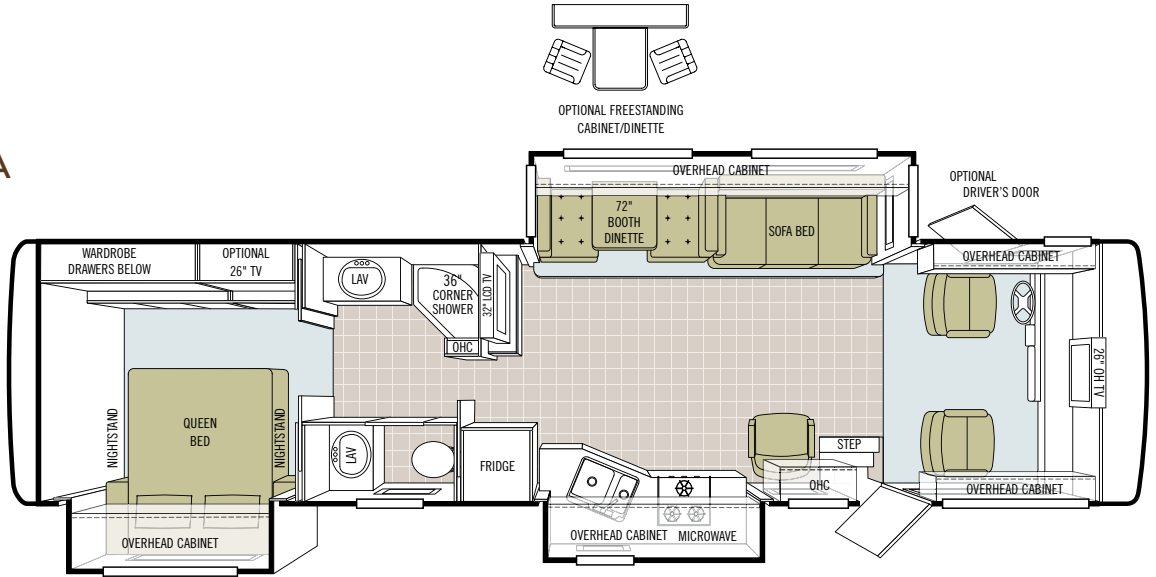


OPTIONAL FREESTANDING CABINET/DINETTE

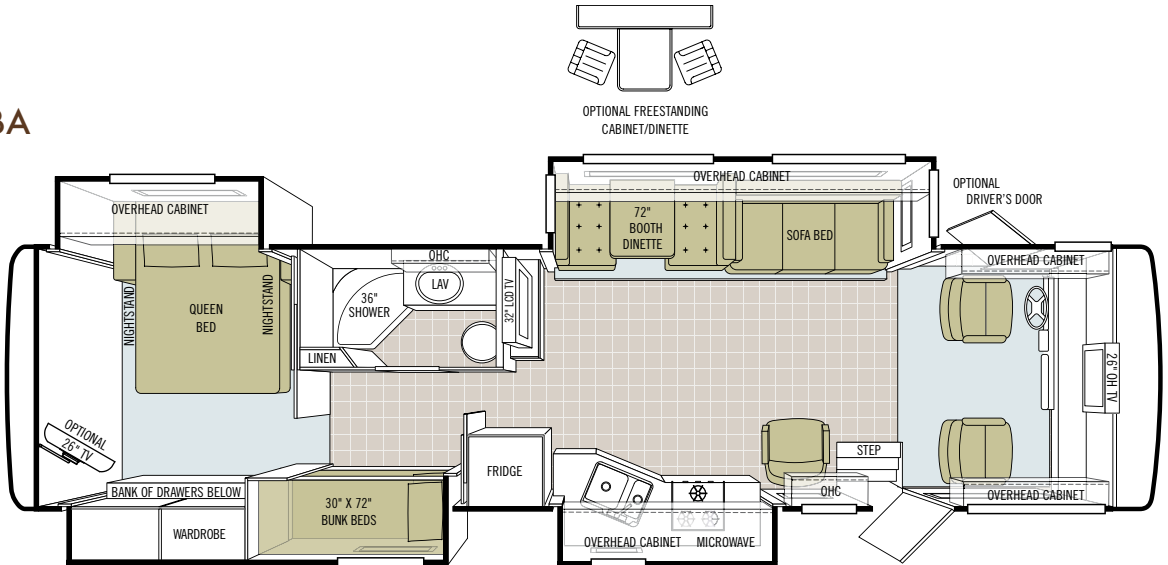
32 LA



34 TGA



35 QBA





SILVER SAND



MOCHA SILVER SAND



SUNLIT SAND



MOCHA SUNLIT SAND

Note: Mocha is similar in hue to Standard Black, but offers more of a warm chocolate tone.



GOLD CORAL



MOCHA GOLD CORAL



MAROON CORAL



MOCHA MAROON CORAL

Note: Mocha is similar in hue to Standard Black, but offers more of a warm chocolate tone.

INTERIOR SPECIFICATIONS

CABINETS & FABRICS

All cabinet doors are made of solid wood.



Natural Maple



Cherry Bark



Medium Alderwood

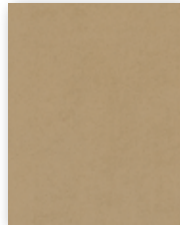


Carpet

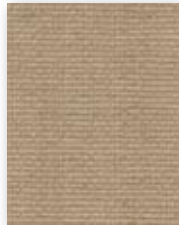
AZURE



Bedroom



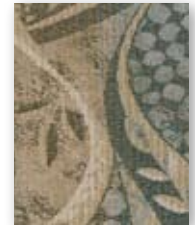
Bedroom Accent



Sofa/Chair



Living Area Accent

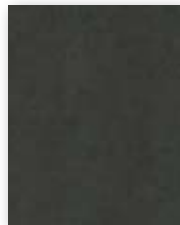


Dinette

MATISSE



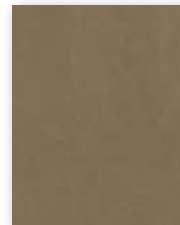
Bedroom



Bedroom Accent



Sofa/Chair



Living Area Accent

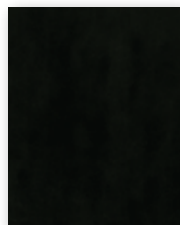


Dinette

PAPYRUS



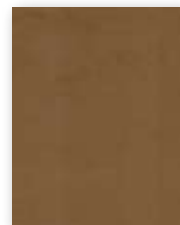
Bedroom



Bedroom Accent



Sofa/Chair



Living Area Accent



Dinette

All cabinet finishes are available in combination with all fabric schemes.

TECHNICAL SPECIFICATIONS

AUTOMOTIVE

STANDARD EQUIPMENT ON ALL MODELS:

- TorqShift® 5-speed Automatic Overdrive with Tow/Haul Mode (Ford)
- 1000 MH Series 6-speed Automatic Allison Transmission with Overdrive (Workhorse)
- Cruise Control
- Emergency Start Switch

FORD CHASSIS	30 DA	32 BA	32 LA	34 TGA	35 QBA
Engine - 362 HP	6.8 L V10	6.8 L V10	6.8 L V10	6.8 L V10	6.8 L V10
Torque (Lb.-Ft. Max. Net)	457 @ 3250	457 @ 3250	457 @ 3250	457 @ 3250	457 @ 3250
GVWR*	22,000	22,000	22,000	22,000	22,000
GAWR - Front	7,500	7,500	7,500	7,500	7,500
GAWR - Rear	14,500	14,500	14,500	14,500	14,500
GCWR	26,000	26,000	26,000	26,000	26,000
Wheel Base	208	228	228	242	242
Tire Size*	235/80R 22.5-GXRV	235/80R 22.5-GXRV	235/80R 22.5-GXRV	235/80R 22.5-GXRV	235/80R 22.5-GXRV
Fuel Tank (Gallons)	75	75	75	75	75
Alternator Amps	130	130	130	130	130
Trailer Hitch Capacity (Pounds)	5,000	5,000	5,000	5,000	5,000

*Also available as 20,500 GVWR / 19.5" wheel & tires, while supplies last.

WORKHORSE CHASSIS	30 DA	32 BA	32 LA	34 TGA	35 QBA
Engine - 340 HP	8.1 L V8	8.1 L V8	8.1 L V8	8.1 L V8	8.1 L V8
Torque (Lb.-Ft. Max. Net)	455 @ 3200	455 @ 3200	455 @ 3200	455 @ 3200	455 @ 3200
GVWR	22,000	22,000	22,000	22,000	22,000
GAWR - Front	8,000	8,000	8,000	8,000	8,000
GAWR - Rear	14,500	14,500	14,500	14,500	14,500
GCWR	26,000	26,000	26,000	26,000	26,000
Wheel Base	208	228	228	242	242
Tire Size	235/80R 22.5	235/80R 22.5	235/80R 22.5	235/80R 22.5	235/80R 22.5
Fuel Tank (Gallons)	75	75	75	75	75
Alternator Amps	130	130	130	130	130
Trailer Hitch Capacity (Pounds)	5,000	5,000	5,000	5,000	5,000

FREIGHTLINER FRONT ENGINE DIESEL CHASSIS	30 DA	32 BA	32 LA	34 TGA	35 QBA
Engine - 300 HP	NA	Cummins	Cummins	Cummins	Cummins
Torque (Lb.-Ft. Max. Net)	NA	620 @ 1500	620 @ 1500	620 @ 1500	620 @ 1500
GVWR	NA	24,000	24,000	24,000	24,000
GAWR - Front	NA	9,000	9,000	9,000	9,000
GAWR - Rear	NA	15,000	15,000	15,000	15,000
GCWR	NA	26,000	26,000	26,000	26,000
Wheel Base	NA	228	228	242	242
Tire Size	NA	235 / 80R 22.5	235 / 80R 22.5	235 / 80R 22.5	235 / 80R 22.5
Fuel Tank (Gallons)	NA	80	80	80	80
Alternator Amps	NA	160	160	160	160
Allison Transmission	NA	S	S	S	S
Trailer Hitch Capacity (Pounds)	NA	5,000	5,000	5,000	5,000

OVERALL

MODELS:	30 DA	32 BA	32 LA	34 TGA	35 QBA
Overall Length (Approximate)	31' 3"	32' 10"	32' 10"	34' 10"	35' 10"
Overall Height with Roof Air (Maximum)	12' 7"	12' 7"	12' 7"	12' 7"	12' 7"
Interior Height	83.5"	83.5"	83.5"	83.5"	83.5"
Overall Width	101"	101"	101"	101"	101"
Interior Width	96"	96"	96"	96"	96"
Fresh Water (Gallons)	53	53	53	53	53
Black Water (Gallons)	35	35	35	35	35
Grey Water (Gallons)	70	70	70	70	70
LPG Tank (Gallons; can only be filled to 80% capacity)	24	24	24	24	24
Minimum Garage Height	13'	13'	13'	13'	13'
Basement Storage (Cubic Feet - Approximate)	57	67	67	69	69

STRUCTURAL

STANDARD EQUIPMENT ON ALL MODELS:

- Laminated Floor, Sidewall & Roof
- Steel/Aluminum Reinforced Structure
- One-piece Moisture Resistant Molded Fiberglass Roof Cap

EXTERIOR

STANDARD EQUIPMENT ON ALL MODELS:

- Fiberglass Front & Rear End Caps
- Tinted One-piece Windshield
- 5.5 kw Onan® Generator (Gas Engine Only)
- One 13,500 BTU High Profile Roof Coleman A/C (High Efficiency)
- Quiet A/C Roof-ducted System
- Double Electric Step
- 1/4" Thick Single Pane Windows
- Horizontal Mounted Wipers
- Heated Power Mirrors
- Gel-coat Fiberglass Walls
- Exterior Patio Light
- Power Patio Awning
- Slideout Awning(s)
- Leveling Jacks
- Chrome Wheels
- Convenient Access Doors with Gas Shocks
- Ridged Long-life Storage Boxes
- Single Handle Lockable Storage Door Latches
- Heated Water & Holding Tank Compartments
- Two 6 V Auxiliary Batteries
- Park Telephone Ready
- Digital / Analog TV Antenna
- Cable Ready TV
- 50 Amp Service
- Black Holding Tank Flush System
- Exterior Rinse Hose / Shower
- Back-up Monitor
- 110 V Exterior Receptacle
- 110 V / 12 V Converter
- Undercoating
- Roof Ladder
- External Tripod Satellite Hook-up

AVAILABLE OPTIONS:	30 DA	32 BA	32 LA	34 TGA	35 QBA
6.0 kw Onan® Diesel Generator* (FRED Chassis Only)	NA	S*	S*	S*	S*
7.0 kw Onan® Generator (Gas Engine Only)	O	O	O	O	O
Automatic Satellite	O	O	O	O	O
One 15,000 BTU High Profile Roof A/C with Heat Pump	O	O	O	O	O
2nd 13,500 BTU High Profile Roof Coleman A/C (High Efficiency)	O	O	O	S	S
Side View Cameras Activated with Turn Signals	O	O	O	O	O
CB Antenna	O	O	O	O	O
Paint Protective Film	O	O	O	O	O
Full Body Paint	O	O	O	O	O

*Standard on all FRED chassis models only

DRIVER'S COMPARTMENT

STANDARD EQUIPMENT ON ALL MODELS:

- Entry Floor Light
- Step Switch & 12 V Disconnect Switch
- Non-powered Cloth Passenger & Driver Seats (Flexsteel®)
- Lighted Instrument Panel
- Single CD Player & AM/FM Stereo
- Passenger Slide Tray / Computer Drawer
- 12 V Dash Receptacle
- Tilt Steering Wheel
- Dual Dash Fans
- Windshield Privacy Curtain
- Fire Extinguisher
- Snack / Beverage Tray

AVAILABLE OPTIONS:	30 DA	32 BA	32 LA	34 TGA	35 QBA
Powered Cloth Driver Seat (Flexsteel®)	O	O	O	O	O
Driver's Door with Power Window	O	O	O	O	O
26" LCD TV (Front)	S	S	S	O	O

LIVING AREA / DINETTE

STANDARD EQUIPMENT ON ALL MODELS:

- Booth Dinette with Large Pull-out Storage Drawers
- Cloth Sofa Bed
- Cloth Swivel Chair
- Decorative Wall Hanging

AVAILABLE OPTIONS:	30 DA	32 BA	32 LA	34 TGA	35 QBA
Cloth Air Coil® Hide-a-bed	NA	O	O	O	O
DVD Player	O	O	O	O	O
Freestanding Dinette with Cabinets	NA	O	O	O	O
32" LCD TV in Mid Section	NA	NA	NA	S	S
Home Theater Surround Sound System (Includes DVD Player)	O	O	O	O	O

KITCHEN

STANDARD EQUIPMENT ON ALL MODELS:

- Single Lever Satin Nickel Sink Faucet
- Solid Surface Countertop Accent Edging
- 3-burner Cooktop with Oven
- 8 Cubic Foot Refrigerator
- Double Bowl Kitchen Sink
- Solid Surface Backsplashes
- Microwave

AVAILABLE OPTIONS:	30 DA	32 BA	32 LA	34 TGA	35 QBA
Convection Microwave	O	O	O	O	O
Ice Maker in Refrigerator	O	O	O	O	O
Solid Wood Refrigerator Panels	O	O	O	O	O

BATH

STANDARD EQUIPMENT ON ALL MODELS:

- Medicine Cabinet
- Skylight in Shower
- Satin Nickel Vanity Faucet
- Fiberglass Molded Shower

AVAILABLE OPTIONS:	30 DA	32 BA	32 LA	34 TGA	35 QBA
Fantastic® Fan (Water Closet Only)	O	O	O	O	O

BEDROOM

STANDARD EQUIPMENT ON ALL MODELS:

- Wardrobe with Automatic Light
- Carbon Monoxide Detector
- LPG Leak Detector
- Wall-to-wall Carpeting
- Bed Comforter
- Innerspring Mattress
- Bed Pillows

AVAILABLE OPTIONS:	30 DA	32 BA	32 LA	34 TGA	35 QBA
26" LCD TV	O	O	O	O	O
Bedroom Day / Night Shades	O	O	O	O	O
DVD Monitors in Bunk	NA	NA	NA	NA	O

GENERAL INTERIOR

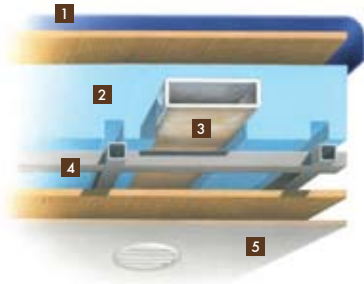
STANDARD EQUIPMENT ON ALL MODELS:

- Raised Panel Cabinet Doors
- Vinyl Headliner
- Medium Alderwood Solid Cabinet Doors & Drawer Fronts
- Wall-to-wall Vinyl Tile Flooring in Living Room, Kitchen & Bath
- Ball Bearing Drawer Slides
- Scotchgard® Treated Carpet & Fabrics
- Day / Night Pleated Shades in Living Room
- Power Roof Vents
- Tank Level Monitor System
- Smoke Detector
- 6-gallon DSI Gas / Electric Water Heater
- Compartment Door with Single Point Latch

AVAILABLE OPTIONS:	30 DA	32 BA	32 LA	34 TGA	35 QBA
Vacuum Cleaner System	O	O	O	O	O
One 30,000 BTU Ducted Furnace	S	NA	NA	NA	NA
One 35,000 BTU Ducted Furnace	NA	S	S	S	S
Natural Maple Solid Cabinet Door & Drawer Front	O	O	O	O	O
Cherry Bark Solid Cabinet Door & Drawer Front	O	O	O	O	O
Surround Sound System	O	O	O	O	O

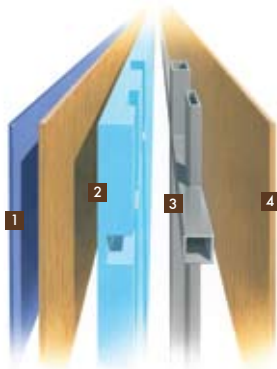
All options may not be available in all models. Because of progressive improvements, specifications, standard & optional equipment are subject to change without notice or obligation.

CONSTRUCTION SPECIFICATIONS



ROOF

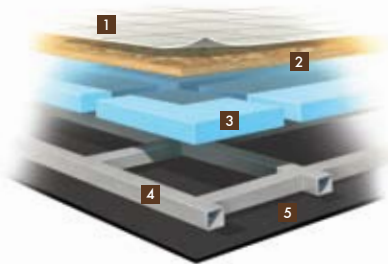
1. One-piece, moisture resistant molded fiberglass roof cap provides insulation and strength and prevents water intrusion
2. 5 1/2" high-performance thermal insulation
3. Quiet Air Cooling System with return air and cooling exhaust ducts foil-wrapped to deflect UV rays and repel heat
4. Durable, tubular steel roof skeleton
5. Easy-to-clean soft touch vinyl ceiling panel



SIDEWALL

1. Gel-coat fiberglass outside wall panel
2. High-performance thermal insulation
3. Durable, yet lightweight, tubular aluminum wall skeleton
4. Decorative inside wall panel

All sidewalls are approximately 2" thick.



FLOOR

1. Vinyl tile flooring bonded to high-impact oriented strand board
2. High-level engineered oriented strand board
3. High-performance thermal insulation
4. Durable, tubular steel floor skeleton
5. Woven moisture barrier material

10-YEAR LIMITED UNITIZED CONSTRUCTION WARRANTY The structural integrity of the entire coach is guaranteed for the next 10 years. Warranty includes wall separation and inner frame weakness.

5-YEAR LIMITED LAMINATION WARRANTY We guarantee against all exterior fiberglass delamination or wall separation.

TIFFIN MOTORHOMES, INC. 105 2ND STREET NW RED BAY, AL 35582
CALL 256.356.8661 FAX 256.356.8219
FOR PARTS AND SERVICE CALL 256.356.0261

For more specifics on what makes a Tiffin Motorhome, go to tiffinmotorhomes.com

The following names are registered trademarks of Tiffin Motorhomes: Open Road®, Phaeton®, Allegro®, Allegro Bay®, Allegro Bus®, Zephyr®, Roughing It Smoothly®, and Pusher®.