

Zephyr



TIFFIN MOTORHOMES

ZEPHYR® 2010

20
10



TIFFIN MOTORHOMES

WHEREVER YOU GO, WE GO.



ROCKY MOUNTAIN BROWN EXTERIOR



45 FEET OF EVERYTHING WE KNOW.

Only a few Zephyrs roll off our line in Red Bay each year, but for the families that make it a part of their travels, it's an experience unlike any other. The Zephyr embodies the best of everything we've learned about building a luxurious motor home. From front to back, it offers freedom and comfort like nothing else on the road. Six stunning exterior color options include standard BASF full body paint plus a front cap protective film to keep the finish looking beautiful. 2010 brings the option of an all-electric coach with a flat glass cooktop, eliminating the propane tank in favor of storage. Three air conditioners with electric heat pumps keep everyone comfortably warm or refreshingly cool year-round. Two different 45-foot floor plans make room for everything in your life. The 45 QBZ offers a large rear bath and half bath just off the living room, perfect for guests.

Zephyr<sup>20
10</sup>



WELCOME TO THE SEAT OF POWER.

COCKPIT

When the road calls, your Zephyr can answer with authority, thanks to a 500 HP Cummins ISM 10.8-liter engine paired with a Spartan K2 chassis. Sink into the Flexsteel® Ultra Leather six-way power seat, turn on the GPS, and you're ready to go. You can also stop with confidence, courtesy of the two-stage engine brake system. A reverse-activated camera and turn-signal activated side-view cameras are standard, as are an intelligent energy management system, built-in satellite radio (subscription optional), exterior keyless entry, and a new top-of-the-line SeeLevel electronic tank monitor.





COCKPIT WITH NAVIGATION SYSTEM

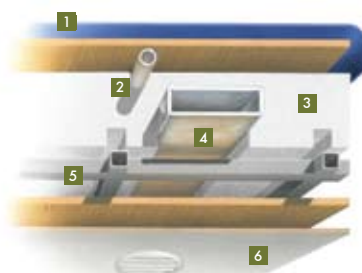


ACTUALLY, YOU CAN ENGINEER HAPPINESS.

At Tiffin, our engineers employ innovative construction techniques, like the unique drainage system in the roof to channel A/C condensation. And we use high-quality components, such as laminated sidewalls and floors to provide ultimate durability and sturdiness on the road. This ensures our owners enjoy lasting value, year after year. For a complete list of specifications and options, please visit tiffinmotorhomes.com

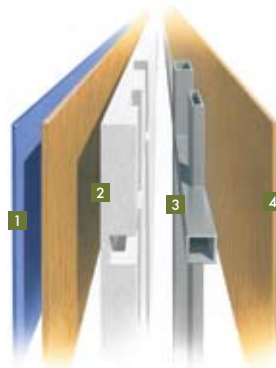
CONSTRUCTION SPECIFICATIONS

ROOF



1. One-piece, moisture resistant molded fiberglass roof cap provides insulation and strength and prevents water intrusion
2. A/C Condensation Drainage System that runs internally through the roof insulation and down the sidewalls, redirecting water underneath the motor home
3. 5 1/2" formed insulation
4. Quiet Air Cooling System with return air and foil-wrapped cooling exhaust ducts
5. Durable, tubular aluminum roof skeleton
6. Easy-to-clean soft touch vinyl ceiling panel

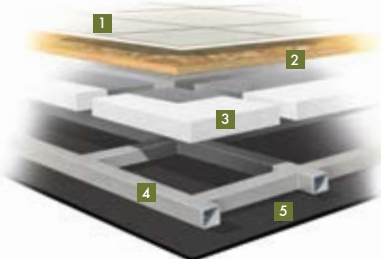
SIDEWALL



1. Gel-coat fiberglass outside wall panel
2. High-performance thermal insulation
3. Durable, yet lightweight, tubular aluminum wall skeleton
4. Decorative inside wall panel

All sidewalls are approximately 2" thick.

FLOOR



1. Porcelain tile floor bonded to high-impact oriented strand board
2. High-level engineered oriented strand board
3. High-performance thermal insulation
4. Durable, tubular steel floor skeleton
5. Woven moisture barrier material

TECHNICAL SPECIFICATIONS

AUTOMOTIVE

STANDARD EQUIPMENT ON ALL MODELS:

- 500 HP @ 1,900-2,000 rpm Cummins ISM 10.8-liter Engine
- Allison 4000 MH Transmission
- Heavy Duty Rear Hitch with 15,000 Lb. Towing Capacity
- Six Aluminum Wheels
- Independent Front Suspension
- Two-stage Engine Brake
- Full Air Brakes
- VIP Smart Wheel
- Hadley SLS - Automatic Air Leveling System
- Fog Lights

SPARTAN K2 CHASSIS

Torque (Lb.-Ft. Max. Net)	1550 @ 1,300	GCWR	61,600 Lb.
GVWR	46,600 Lb.	Fuel Tank (Gallons)	150
GAWR-Front	16,600 Lb.	Wheel Base	316" (292" From Front Axle to Drive Axle)
GAWR-Rear	20,000 Lb.	Tire Size	315/80R22.5
Tag Axle	10,000 Lb.	Alternator Amps	270

OVERALL

Overall Length - Approximately	44' 9"	Fresh Water (Gallons)	90
Overall Height with Roof Air (Maximum)	12' 10"	Black Water (Gallons)	50
Interior Height	84"	Grey Water (Gallons)	70
Overall Width	101"	LPG Tank (Gallons; limited to 80% capacity)	24.4
Interior Width	96"	Minimum Garage Height	13'
Basement Storage (Cubic Feet - Approximate)	167.5		

STRUCTURAL

STANDARD EQUIPMENT ON ALL MODELS:

- Steel Cockpit Overhead Support Structure
- Seamless One-piece Gel-coat Fiberglass Molded Roof Cap
- One-piece Molded Gel-coat Fiberglass Front & Rear Caps with Integrated Air Intake
- Gel-coat Fiberglass Outside Wall Panels
- Steel/Aluminum Laminated Side Walls, Floor & Roof
- 1/2" Laminated Floor Decking
- Insulated Roof Duct Laminated into Roof Construction
- Steel Basement Construction

EXTERIOR

STANDARD EQUIPMENT ON ALL MODELS:

- One-piece Fiberglass Gel-coat Front & Rear Fenders with Integrated Storage
- Fiberglass Gel-coat Engine Access Door with Swing-up Hinges & Shocks
- One-piece Aluminum Face Swing-out Baggage Doors with Integrated Power Locks
- Pass-through Full Basement
- Slide-out Storage Tray (Slides Out Both Sides)
- 12,500 Onan® Generator
- Phone, 120 V & 12 V Outlets Inside Storage Compartment
- Auto Generator Start System
- Eight House Batteries
- Powered Pullout for Generator Access
- Three Low Profile Roof Air Conditioners with Heat Pumps
- Two 125 Watt Solar Panels
- Easy Hook-up Water Compartment with Built-in Hose Exits
- Multi-port Manifold System for Hot & Cold Water Lines
- Fiberglass Water Service Center Panel & Compartment
- Water Pump Switch Located at Galley, Lavatories & Water Service Compartment
- In-motion Low-profile HD Satellite System
- One-piece Panoramic Windshield
- Black Tank Flush System
- Water Filter
- Power Garden Hose Reel
- Outside Shower
- Air Horn
- Recessed Docking Lights
- Basement & Outside Compartment Lights
- Porch Lights
- Lighted Exterior Grab Handle
- Deadbolt Entrance Door Lock
- Keyless Entry System (Includes Exterior Compartment Doors)
- Custom Mud Flap
- HD TV Antenna
- Electric Power Cord Reel
- 32" Exterior LCD TV
- Carefree Paramount Awning (Three Positions)
- Diamond Shield® Front Cap Protective Coating
- Aerodynamic Streamlined Appearance
- SeeLevel Tank Monitor
- Tank Monitor Pad Located at Dump Station
- Magnum Sine Wave Inverter

AVAILABLE OPTIONS:

	45 QBZ	45 QEZ
2nd Slide-out Tray	<input type="radio"/>	<input type="radio"/>
2nd Carefree Paramount Awning (Patio Side Only)	<input type="radio"/>	<input type="radio"/>

DRIVER'S COMPARTMENT

STANDARD EQUIPMENT ON ALL MODELS:

- Ergonomic Wrap-around Dash with Burl Wood Instrument Panels
- Back Light Lettering for Dash Controls
- Built-in Driver & Passenger Consoles with Control Switches
- Six-way Power Driver & Passenger Seats including Passenger Power Footrest
- Integrated Driver & Passenger Seat Belts
- 32" LCD TV Over Cockpit
- Computer Slide-out Tray in Dash with Lock-out Rails
- In-dash Stereo / GPS
- Storage Drawers with Built-in Beverage Tray
- Smart Wheel with Controls for ICC, Cruise & Windshield Wipers
- Adjustable Accelerator & Brake Pedals
- Power Steering
- Driver & Passenger Overhead Fans
- Driver & Passenger Map Lights
- Power MCD Solar / Privacy Windshield Shade
- Driver / Passenger Side Power Windows & Power MCD Solar / Privacy Shades
- Dual 12 V Outlets in Dash Area (Driver)
- Phone Jack 12 V Outlet (Passenger)
- Color Rear Vision Monitor System with Side-view Cameras
- Side-view Cameras Activated by Turn Signals
- Compass with Outside Temperature
- CB Radio with Antenna
- Satellite Radio (Requires Subscription)
- Cellular Phone Antenna
- 12 V Battery Power Disconnect
- Fire Extinguisher



THE SECOND HOME THAT PUTS EVERYTHING FIRST.

LIVING AREAS



In a Zephyr, no detail is overlooked. Water closet sinks are the latest above-counter vessel design that you would see in the finest homes. Ceiling air vents are elegantly concealed by a decorative panel. The stacked washer/dryer is discreetly placed out of sight in its own closet. Even the shower skylight has a sliding cover to reduce daytime heat. This year's Zephyr offers three color schemes, Belair, Graphite, and Fabrics by Ralph Lauren, plus six distinctive cabinet color options. Tile floors are standard in the living areas and baths, with the option of full tile throughout in the 45 QBZ. A luxurious king-sized bed is standard, with an optional memory foam mattress to give you an even more luxurious night's rest. The versatile kitchen with an Expand-an-island gives you a double-bowl stainless steel sink and vast counter space.



THERE'S MORE THAN ONE PERFECT.

INTERIOR OPTIONS



Natural Cherry



Cherry Wood



Cherry Bark



Glazed Honey



Glazed Cherry



White Chocolate in Bath
Available Only in Combination with
Glazed Cherry or Glazed Honey

BELAIR



Bedroom/
Bedroom Accent



Sofa



Living Area Accent



Dinette



Carpet

GRAPHITE



Bedroom/
Bedroom Accent



Sofa



Living Area Accent

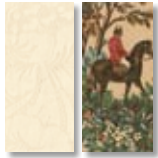


Dinette



Carpet

FABRICS BY
RALPH LAUREN



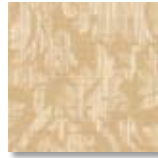
Bedroom/
Bedroom Accent



Sofa



Living Area Accent



Dinette



Carpet

Cabinet doors are made of solid wood, and all cabinet finishes are available in combination with any fabric scheme.

All options may not be available in every model. Specifications and standard or optional equipment are subject to change without notice or obligation. For a complete list of specifications and options, please visit tiffinmotorhomes.com

INTERIOR SPECIFICATIONS

STANDARD EQUIPMENT ON ALL MODELS

GENERAL INTERIOR

- Wall Mounted Thermostats
- 12 V Attic Fans with Hardwood Louvers & Wall Mounted Controls
- Cable TV Hook-up & Phone Jacks
- Solid Hardwood Raised Panel Doors
- Carpeted Cabinet Shelves
- Ball Bearing Drawer Slides
- In-motion Digital Satellite Dish
- Wallpaper Covering on Sidewalls
- Padded Soft Touch Vinyl Ceiling
- Power MCD Solar / Privacy Shades
- Porcelain Tile Flooring
- Built-in Speakers with Matching Hardwood Louvers
- 3000 Watt Sine Wave Inverter
- Bullet Lights in Ceiling
- Ceiling Flush Mounted Multi-lighting System
- Wall Mounted Switches for Lights & Accessories
- Rope Lights Beneath Galley / Bedroom Vanity Area & in Window Valances
- 50 Amp Distribution
- 12 V Fuse Panel
- Ducted Return Air Conditioning System
- Energy Management System
- Air Driven Step Well Cover
- Battery Disconnect Switch
- Smoke Alarm
- GFI Outlets at Galley & Lavatories
- Lighted Interior Grab Handle
- Entertainment System
- Complete Cable Wiring Interfacing with Surround Sound & Satellite Receiver
- Hydronic Heating System with Continuous Hot Water

AVAILABLE OPTIONS:

All Electric Coach

45 QBZ

45 QEZ

LIVING AREA / DINETTE

- Freestanding Dinette with Built-in Storage Cabinets
- Full Porcelain Tile Flooring
- Decorative Ceiling Panel
- Home Theater System with DVD Player
- Cloth Magic Sofa Bed on Driver's Side
- Ultra Leather Magic Sofa Bed on Passenger's Side
- Decorative Wall & Dinette Lighting Package
- Carbon Monoxide Detector

AVAILABLE OPTIONS:

Ultra Leather Air-Coil® Hide-a-bed on Passenger's Side

45 QBZ

45 QEZ

Cloth Air-Coil® Hide-a-bed on Passenger's Side

Cloth Magic Sofa Bed on Passenger's Side

Two Leather Lift Recliners on Driver's Side

Ultra Leather Magic Sofa Bed on Driver's Side

Leather Lift Recliner with Computer/End Table on Driver's Side

Ultra Leather U-shaped Dinette / Sleeper Sofa Combination

Freestanding Dinette with Computer Workstation

37" Mid-living Room Entertainment Center

NA

S

42" Mid-living Room Entertainment Center

S

NA

KITCHEN

- Solid Surface Countertops and Splash Guards
- Stainless Steel Refrigerator with Ice Maker in Door
- Recessed Princess Two-burner Cooktop with Solid Surface Covers
- Integrated Solid Surface Galley Sink with Solid Surface Covers
- Expand-an-island
- Ceramic Tile Backsplash with Decorative Inlays
- Stainless Steel Convection Microwave with Exterior Venting
- Power MCD Solar / Privacy Shades & Hardwood Valance
- Built-in Soap Dispenser

BATH

- Two Lavatories with Medicine Cabinets & Drawers
- Elongated Ceramic Toilet with Electric Flush
- Integrated Solid Surface Lavatory Sink
- Vessel Lavatory Sink with Built-in Soap Dispenser
- Cosmetic Lights over Lavatories
- Towel Holders, Robe Hook, & Lavatory Accessories Package
- Scrolled Glass Pocket Doors
- Curved Shower Enclosure Door
- Stacked Washer / Dryer
- Skylight in Shower with Sliding Cover
- Adjustable Shower Head on Slide Bar
- Solid Surface Shower Walls with Inlaid Tile

BEDROOM

- 32" LCD TV
- Select Comfort™ King Mattress (72" x 80") with Nightstands
- Wall-to-wall Carpet
- Shirt Closet with Drawers
- Under Bed Storage
- Ceiling Fan
- LPG Leak Detector
- MCD Solar / Privacy Shades
- Pre-wired for DVD & Satellite Receiver
- Large Wardrobe Closet with Built-in Drawers, Sliding Hardwood / Mirror Doors & Automatic Light

AVAILABLE OPTIONS:

Tile Flooring in Bedroom

45 QBZ

45 QEZ

NA

Memory Foam King Mattress (72" x 80")

FULL BODY PAINT COLORS



GOLD CORAL



MAROON CORAL



NASA



ROCKY MOUNTAIN BROWN

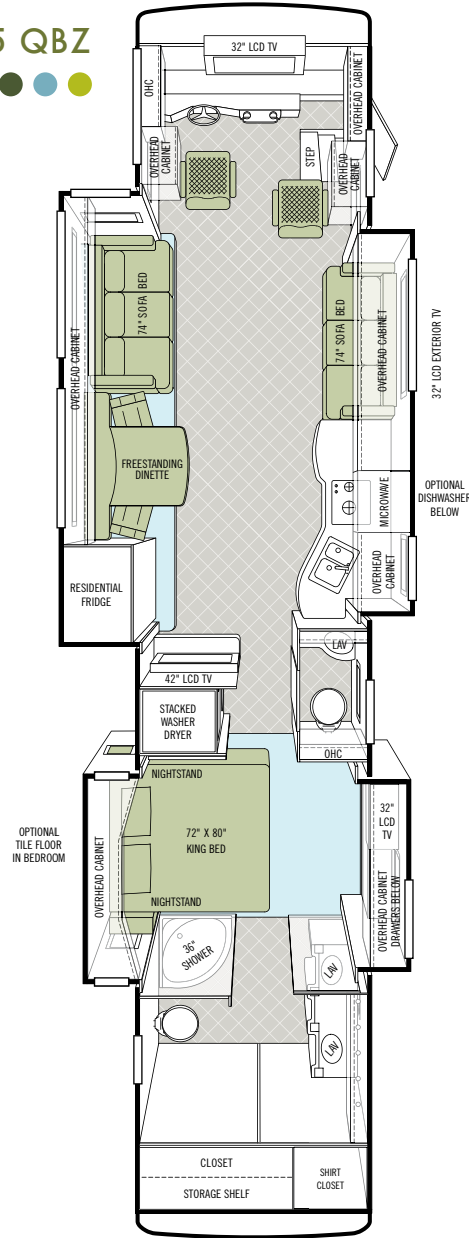


SILVER SAND

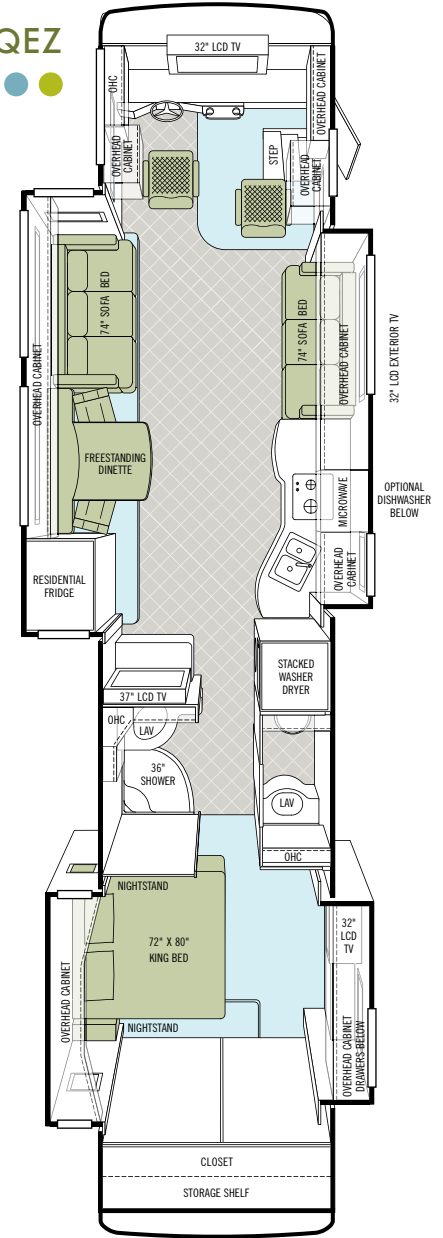


SUNLIT SAND

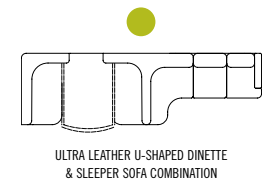
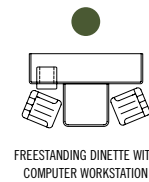
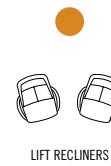
45 QBZ



45 QEZ



OPTIONS AVAILABLE
for 45 QBZ & 45 QEZ



WHEREVER YOU GO, WE GO.

These days, that simple promise carries more weight than ever. In a time when some companies have struggled, a manufacturer who stands behind the product they build has never been more important. We've never been prouder of the strength of our company, our warranty and service plan (still the best in the motor home industry), and most importantly, the trust we've built with a very special group of motor home owners. We understand the richness that travel brings to your life, and our family is so proud of the relationship we have with yours. You are the reason we do what we do and why we never stop working to build a better Tiffin experience for you.

WARRANTIES THAT GO WHEREVER YOU GO.

10-YEAR LIMITED UNITIZED CONSTRUCTION WARRANTY - The structural integrity of the entire coach is guaranteed for the next 10 years. Warranty includes wall separation and inner frame weakness.

5-YEAR LIMITED LAMINATION WARRANTY - We guarantee against all exterior fiberglass delamination or wall separation.



Start your journey by visiting our website. We'd love to hear from you, so give us a call, send us a postcard or stop by our office the next time you pass by Red Bay. Because remember, wherever you go, we go.

Sincerely, 



TIFFIN MOTORHOMES

WHEREVER YOU GO, WE GO.

105 2nd Street NW, Red Bay, AL 35582

call 256.356.8661 fax 256.356.8219 or visit tiffinmotorhomes.com

FOR PARTS AND SERVICE CALL 256.356.0261

The following names are registered trademarks of Tiffin Motorhomes: Open Road®, Phaeton®, Allegro®, Allegro RED®,

Allegro Bay®, Allegro Bus®, Zephyr®, Roughing It Smoothly®, and Pusher®.

DEALER