

04



PHAETON

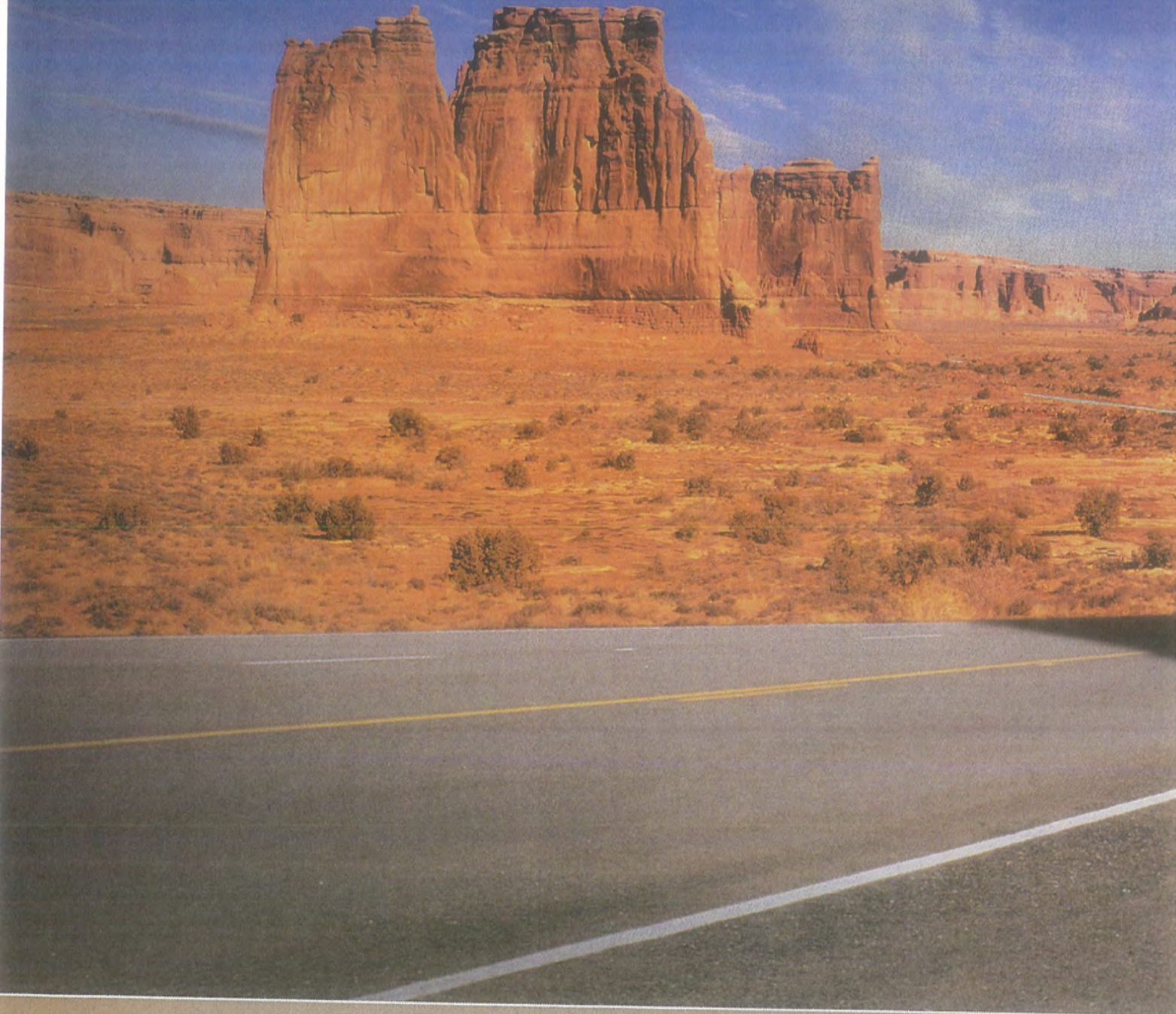
TIFFIN

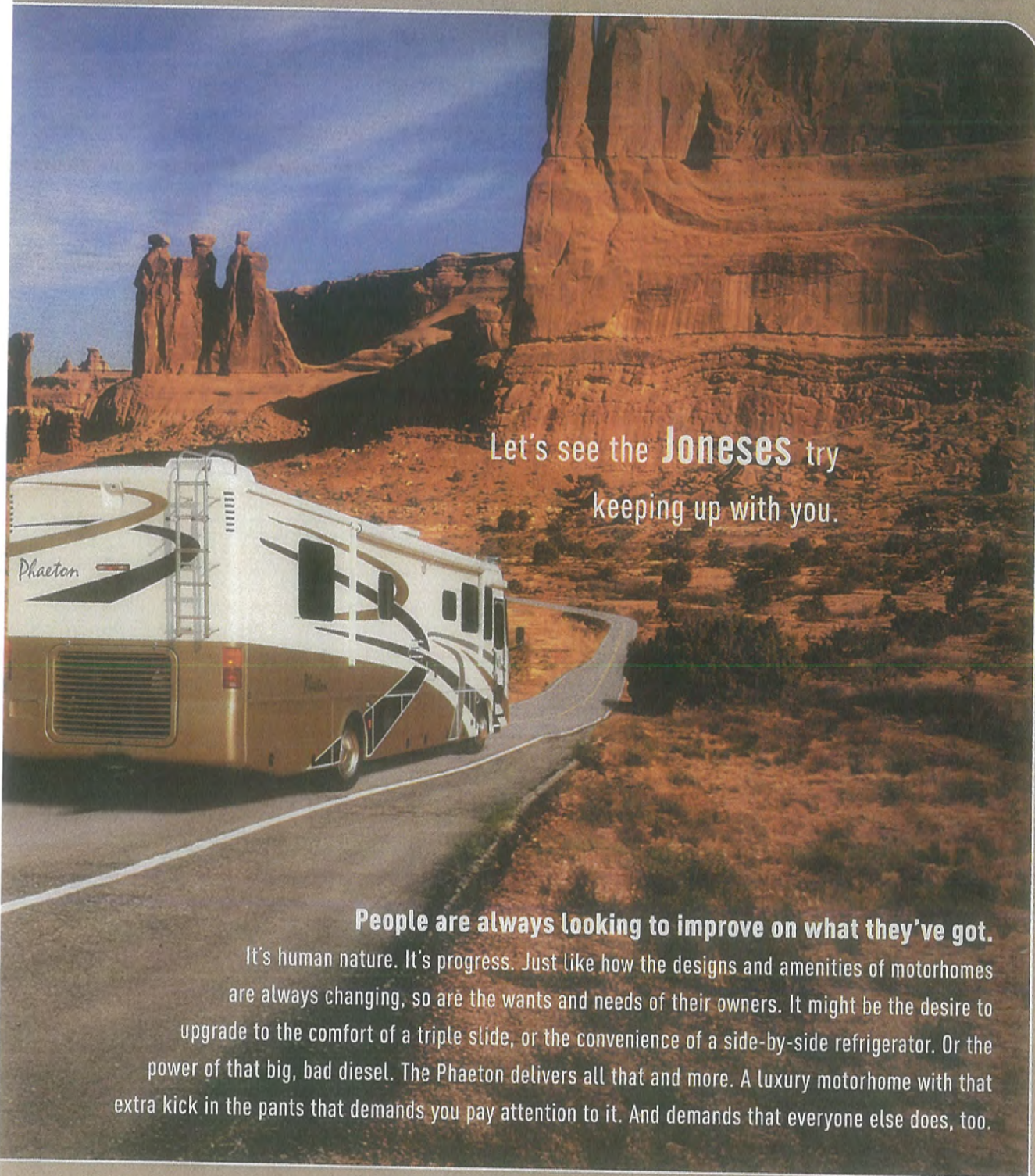


WHEREVER YOU GO, WE GO.



Keeping up with the **Joneses?**





Let's see the **Joneses** try
keeping up with you.

People are always looking to improve on what they've got.

It's human nature. It's progress. Just like how the designs and amenities of motorhomes are always changing, so are the wants and needs of their owners. It might be the desire to upgrade to the comfort of a triple slide, or the convenience of a side-by-side refrigerator. Or the power of that big, bad diesel. The Phaeton delivers all that and more. A luxury motorhome with that extra kick in the pants that demands you pay attention to it. And demands that everyone else does, too.

At a price much less than the competition's comparable models,
you'll be that much more comfortable in your Phaeton.

TIFFIN MOTORHOMES

LIVING ROOM

The space of your living area is what you'll probably notice first. The storage space is what you'll likely appreciate most. Multiple cabinets surrounding the living room and cockpit areas provide expansive storage and quick access to needed items.



QUALITY

Our cabinets have solid hardwood doors and they far outnumber those offered by our competitors, making the interiors of all our coaches much more efficient.

Plush carpeting, comfortable Flexsteel® furniture and solid wood cabinet doors are all standard features.

While competitors' motorhomes may offer solid surface countertops as an added option, it's standard on the Phaeton. And the sink and stovetop covers add even more space.

The functional galley includes abundant cabinet space, a microwave oven, a 3-burner cooktop and an 8 cubic foot refrigerator with raised door inserts.



Soapstone



PHAETON Diesel powered
indulgence

COCKPIT

The 330 HP Caterpillar diesel engine that is available on all Phaetons provides a quick, almost effortless punch that will easily get you where you're going.



CONVENIENCE

The easy to reach AM/FM stereo with CD player and wooden snack tray complete the practicality of the cockpit.

Most of the features can be controlled from the convenient switch clusters in the front of the motorhome.

For extra space in the living room, the captain and passenger seats can be unlocked and swiveled around to provide even more seating when entertaining friends.



Surround Sound is available as an option, while a six-speaker stereo system comes standard.

PHAETON Diesel powered indulgence

BEDROOM

The bedroom in the Phaeton has a roomy, mirrored wardrobe-style closet and a standard 20" color TV.



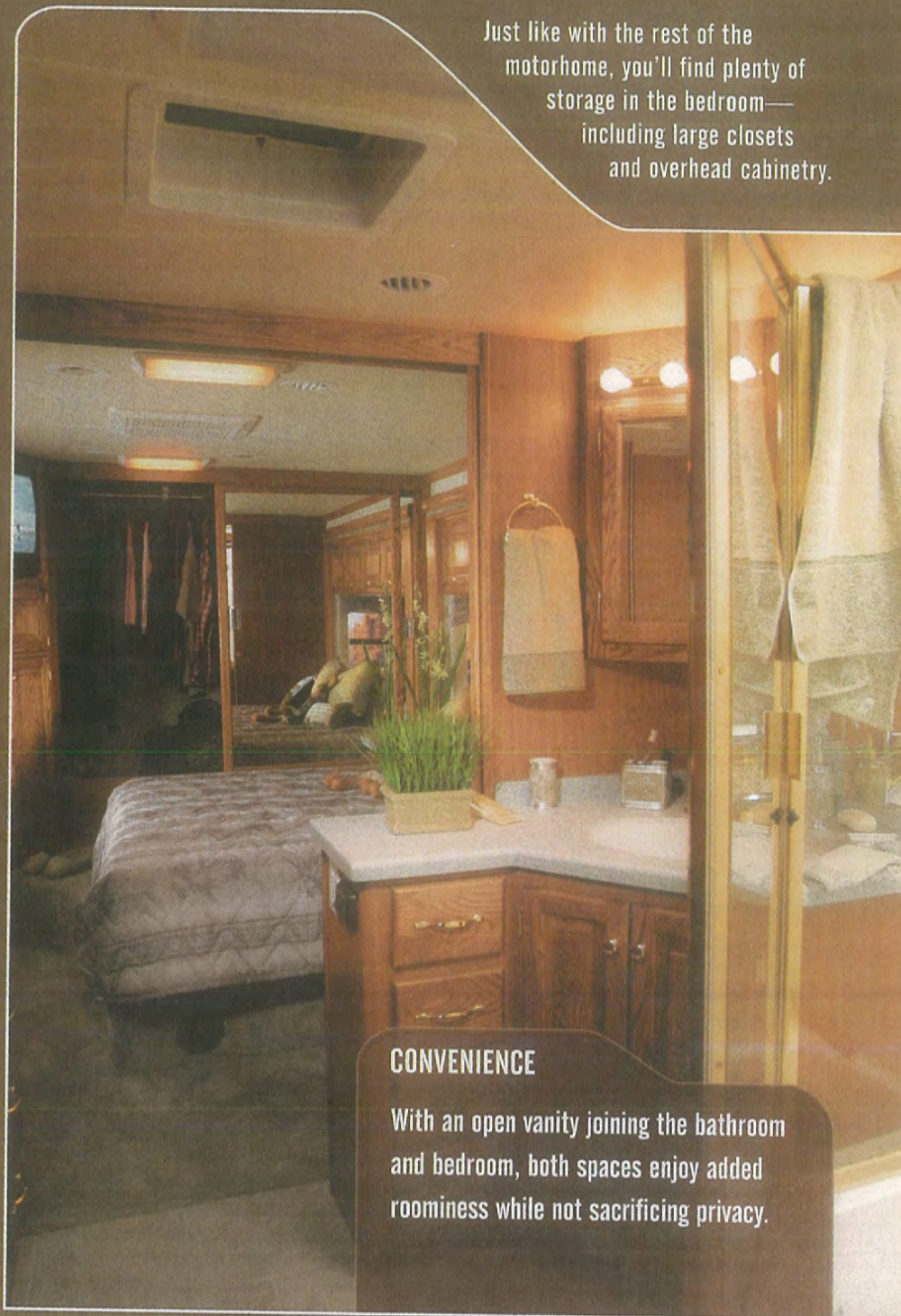
We manufacture our own single pane windows with 1/4" glass rather than the 1/8" glass that most others use. You also have the option of dual pane windows. Like those in your home, they are safer, quieter, more durable and energy efficient.

The bed slide features a mirror headboard flanked by two windows in the slide box.



Soapstone

Just like with the rest of the motorhome, you'll find plenty of storage in the bedroom—including large closets and overhead cabinetry.



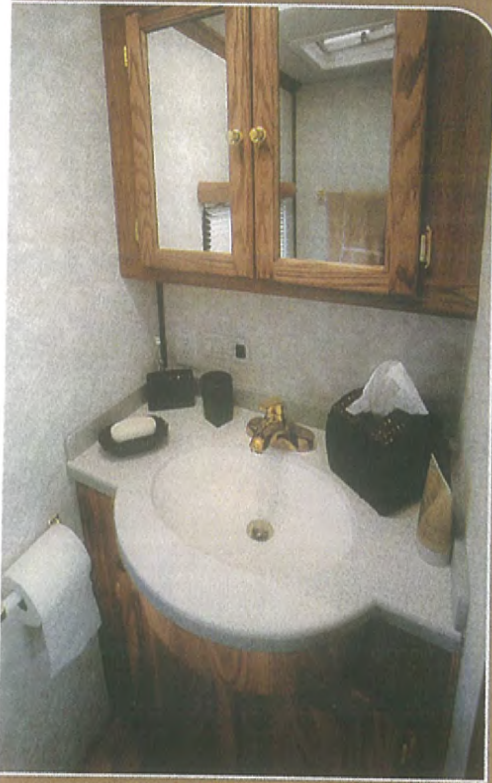
CONVENIENCE

With an open vanity joining the bathroom and bedroom, both spaces enjoy added roominess while not sacrificing privacy.

PHAETON Diesel powered
indulgence

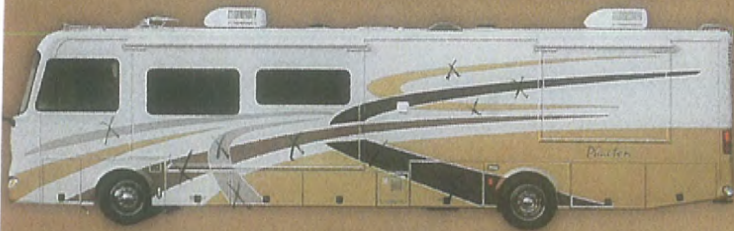
BATHROOM

The split bath in the 38 GH features a spacious vanity with an oval sink, large medicine cabinet and toilet, with a separate shower just across the hall.



QUALITY

Along with our frames and cabinets, we also manufacture all of our own fiberglass parts, ensuring the most stringent quality control.



CONVENIENCE

The Freightliner raised rail chassis allows an incredible amount of storage space in the full basement of the Phaeton.



EXTERIOR

All of our coaches have fiberglass roofs which help with climate control and cut down on the black streaks associated with those made of rubber.



The optional washer & dryer unit is just one of the many amenities that make our coaches feel just like home.

AUTOMOTIVE	MODEL:	35RH	38 GH	40 GH	40 RH	40 TGH
GWR		26,850	29,410	29,410	29,410	29,410
GAWR - Front		9,350	10,410	10,410	10,410	10,410
GAWR - Rear		17,500	19,000	19,000	19,000	19,000
GCWR		36,850	39,410	39,410	39,410	39,410
UVW - Full Tank Fuel & One Half Tank Fresh Water		20,980	22,460	23,440	23,440	23,440
Freightliner		S	S	S	S	S
Raised Rail Chassis Frame		S	S	S	S	S
Cummins Engine 300 HP		S	NA	NA	NA	NA
Caterpillar Engine 330 HP		0	S	S	S	S
Transmission - Allison 3000 MH Six-speed Auto w/ Lock-up		S	S	S	S	S
Alternator Amps		130	130	130	130	130
Wheel Base		208	252	266	266	266
Tire Size		235/80R22.5	255/80R22.5	255/80R22.5	255/80R22.5	255/80R22.5
Tire Manufacturer		Michelin	Michelin	Michelin	Michelin	Michelin
Air Ride (4 Bags)		S	S	S	S	S
Trailer Hitch Capacity		10,000	10,000	10,000	10,000	10,000
Air Brakes with Automatic Slack Adjusters		S	S	S	S	S
ABS Brakes		S	S	S	S	S
Automatic Leveling Jacks		S	S	S	S	S
Cruise Control		S	S	S	S	S
Emergency Start Switch		S	S	S	S	S
Exhaust Brake		S	S	S	S	S
Fuel Tank (Gallons) - Dual Fuel Fill		100	100	100	100	100

OVERALL	MODEL:	35RH	38 GH	40 GH	40 RH	40 TGH
Overall Length		35'10"	38'11"	40'5"	40'5"	40'5"
Overall Height w/ Roof Air		12'3"	12'3"	12'3"	12'3"	12'3"
Interior Height		80"	80"	80"	80"	80"
Overall Width		101"	101"	101"	101"	101"
Interior Width		96"	96"	96"	96"	96"
Fresh Water (Gallons)		90	90	90	90	90
Black Water (Gallons)		45	45	45	45	45
Grey Water (Gallons)		70	70	70	70	70
LPG Tank (Gallons) - can only be filled to 80% capacity		35.7	35.7	35.7	35.7	35.7

SPECIFICATIONS 2004

All options may not be available in all models. Because of progressive improvements, specifications, standard and optional equipment are subject to change without notice or obligation.

STRUCTURAL	MODEL:	35RH	38 GH	40 GH	40 RH	40 TGH
Laminated Floor, Sidewall & Roof		S	S	S	S	S
Steel / Aluminum Reinforced Structure		S	S	S	S	S
EXTERIOR	MODEL:	35RH	38 GH	40 GH	40 RH	40 TGH
Fiberglass Front & Rear Caps		S	S	S	S	S
Dual Fuel Fills		S	S	S	S	S
Large Tinted Windshield		S	S	S	S	S
Fog Lights		S	S	S	S	S
Spotlight		0	0	0	0	0
7.5Kw Onan Manual Slide-out Generator		S	S	S	S	S
Heated Power Mirrors w/Remote Adjustment		S	S	S	S	S
Single Motor Intermittent Wiper		S	S	S	S	S
Gel-Coat Fiberglass Walls		S	S	S	S	S
Exterior Graphics		S	S	S	S	S
Dead Bolt Front Entrance Door		S	S	S	S	S
Double Electric Step		S	S	S	S	S
Dual Pane Windows		0	0	0	0	0
1/4" Thick Single Pane Windows		S	S	S	S	S
Exterior Patio Light		S	S	S	S	S
Manual Door Awning		0	0	0	0	0
Automatic Entry Door Awning		0	0	0	0	0
Automatic Patio Awning		S	S	S	S	S
Slideout Awning(s)		S	S	S	S	S
Window Awning Package		0	0	0	0	0
Slideout Room(s)		1	2	2	2	2
Wheel Liners		S	S	S	S	S
Alcoa Aluminum Wheels		0	0	0	0	0
Mud Flap		0	0	0	0	0
Exterior Flip-up Storage Doors w/Gas Shocks		S	S	S	S	S
Exterior Storage Slide Out Tray		NA	0	0	0	NA
Single Handle, Lockable Storage Door Latches		S	S	S	S	S
Lighted Exterior Storage		S	S	S	S	S
Heated Water and Holding Tank Compartments		S	S	S	S	S
Two 6 Volt Auxiliary Batteries		S	S	S	S	S
2000 Watt Inverter w/100 Amp Converter & Transfer Switching + 2 6V Batteries		0	0	0	0	0
Hadley Air Horns		0	0	0	0	0
Park Telephone Ready		S	S	S	S	S
Cable Ready TV		S	S	S	S	S
Black Tank Flush System		S	S	S	S	S
110v Exterior Receptacle		S	S	S	S	S
110v / 12v Converter		S	S	S	S	S
Domed Fiberglass Roof		S	S	S	S	S
Manual Satellite Dish		0	0	0	0	0
Automatic Satellite Dish		0	0	0	0	0
TV Antenna		S	S	S	S	S
CB Antenna		S	S	S	S	S
Cell Phone Antenna		0	0	0	0	0
Power Fantastic Roof Vent w/3-Speed Fan		S	S	S	S	S
2 - 15,000 BTU High Profile Roof A/C w/ Heat Pump		S	S	S	S	S
Roof Ladder		S	S	S	S	S
Backup Camera and Monitor		S	S	S	S	S
Water Filter		0	0	0	0	0
DRIVER'S COMPARTMENT	MODEL:	35RH	38 GH	40 GH	40 RH	40 TGH
Power Cloth Driver Seat		S	S	S	S	S
Flexsteel Ultra Leather Power Driver and Passenger Seats		0	0	0	0	0
Step Switch and 12 Volt Disconnect Switch		S	S	S	S	S
Snack / Beverage Tray		S	S	S	S	S
Automotive Padded Dash		S	S	S	S	S
6 Disc CD Changer - In Dash		0	0	0	0	0
Single CD Player AM/FM Stereo		S	S	S	S	S
12 Volt Dash Receptacle		S	S	S	S	S
Dual Dash Fans		S	S	S	S	S
Windshield Privacy Curtain		S	S	S	S	S
Power Sun Vectors		0	0	0	0	0
27" Color TV		S	S	S	S	S
VCR		S	S	S	S	S
Fire Extinguisher		S	S	S	S	S

LIVING ROOM / DINETTE

	MODEL:	35RH	38 GH	40 GH	40 RH	40 TGH
Computer Desk		NA	0	0	0	NA
Cloth Recliner (Flexsteel)		S	S	S	S	S
Ultra Leather Recliner (Flexsteel)		0	0	0	0	0
Ultra Leather J-Sofa (Flexsteel)		NA	0	0	0	NA
Ultra Leather Love Seat/E Z Bed - 56"		0	0	0	0	0
Cloth Easy Bed (Flexsteel)		S	S	S	S	S
Ultra Leather E Z Bed Sofa		0	0	0	0	0
Cloth Magic Bed (Best Sleeping Unit)		0	0	0	0	0
Ultra Leather Magic Bed (Best Sleeping Unit)		0	0	0	0	0
Cloth Hide-a-bed		NA	NA	NA	0	0
Ultra Leather Hide-a-bed		NA	NA	NA	0	0
Booth Dinette w/ Formica Table Top and Solid Surface Edging		S	S	S	S	S
Free Standing Dinette w/ Formica Table Top, Solid Surface Edging & Built-in Cabinet		0	0	0	0	0

KITCHEN

	MODEL:	35RH	38 GH	40 GH	40 RH	40 TGH
Solid Surface Counter Top with Acrylic Sink		S	S	S	S	S
Solid Surface Sink Covers		S	S	S	S	S
Single Lever Sink Faucet		S	S	S	S	S
Convection/Microwave w/ 3 Burner Cooktop / Large Drawer/ No Oven		0	0	0	0	0
Convection/Microwave w/ Oven		0	0	0	0	0
Microwave Oven w/ 3 Burner Range with Oven		S	S	S	S	S
6 Cu. Ft. Refrigerator		S	S	S	S	NA
Ice Maker in 6' Refrigerator		0	0	0	0	NA
10 Cu. Ft. Refrigerator w/ Ice Maker		0	0	0	0	NA
Side-by-side Refrigerator w/ Ice Maker		0	0	0	0	S

BATH

	MODEL:	35RH	38 GH	40 GH	40 RH	40 TGH
Medicine Cabinet w/ Vanity Light		S	S	S	S	S
Solid Surface Vanity Top & Bowl		S	S	S	S	S
Garden Shower		S	0	0	0	0
Fiberglass Molded Tub/Shower		NA	S	S	S	S
Frosted Shower Door		0	0	0	0	0
Skylight in Shower		S	S	S	S	S
Extra Fantastic Fan		0	0	0	0	0
China Toilet		S	S	S	S	S

BEDROOM

	MODEL:	35RH	38 GH	40 GH	40 RH	40 TGH
Wardrobe		S	S	S	S	S
Bed Comforter w/ Throw Pillows		S	S	S	S	S
Inner Spring Mattress		S	S	S	S	S
Pillow Top Mattress		0	0	0	0	0
Night Stands		S	S	S	S	S
20" Color TV in Bedroom		S	S	S	S	S
Carbon Monoxide Detector		S	S	S	S	S
LPG Leak Detector		S	S	S	S	S

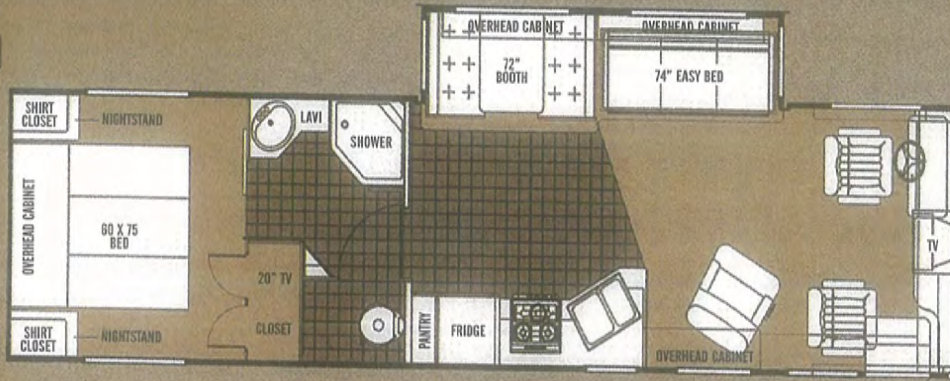
GENERAL INTERIOR

	MODEL:	35RH	38 GH	40 GH	40 RH	40 TGH
Soft Touch Vinyl Ceiling		S	S	S	S	S
Raised Panel Cabinet Doors		S	S	S	S	S
Oak Cabinetry (Simulated)		S	S	S	S	S
Natural Maple Cabinetry (Simulated)		0	0	0	0	0
Walnut Cabinetry (Simulated)		0	0	0	0	0
Ceramic Tile Flooring in Kitchen, Bath & Entrance Landing		0	0	0	0	0
Vinyl Tile Flooring in Kitchen, Bath & Entrance Landing		S	S	S	S	S
Carpeting in Bedroom & Driver's Compartment w/ Scotchgard®		S	S	S	S	S
Treated Carpet and Fabrics		S	S	S	S	S
Day / Night Pleated Shades		S	S	S	S	S
12 Volt Fluorescent Lights		S	S	S	S	S
Power Roof Vents with 3 Speed Fan		S	S	S	S	S
Home Theatre Sound System		0	0	0	0	0
Washer / Dryer		NA	0	0	0	0
Plumbed for Washer / Dryer with Cabinet		NA	0	0	0	0
Central Vacuum Cleaner		0	0	0	0	0
Tank Level Monitor System		S	S	S	S	S
Smoke Detector		S	S	S	S	S
10-gallon Gas / Electric Water Heater		S	S	S	S	S
One 35,000 BTU Ducted Furnace		S	NA	NA	NA	NA
One 35,000 and One 20,000 Ducted Furnace		NA	S	S	S	S
Air Driven Step Well Cover		S	S	S	S	S

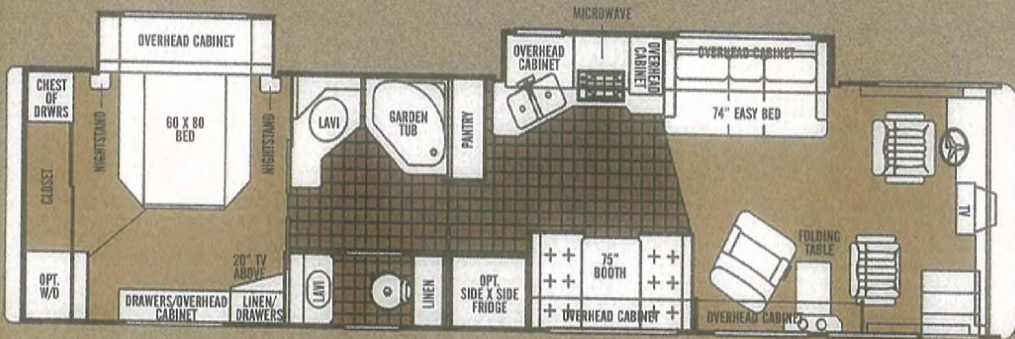
FLOOR PLANS

Aside from our unparalleled customer service, one of the things that Tiffin has been known for over the years is innovative floor plans.

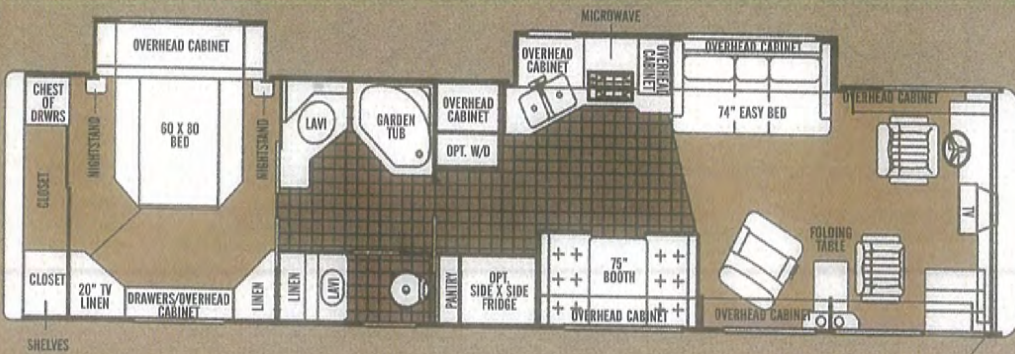
35 RH



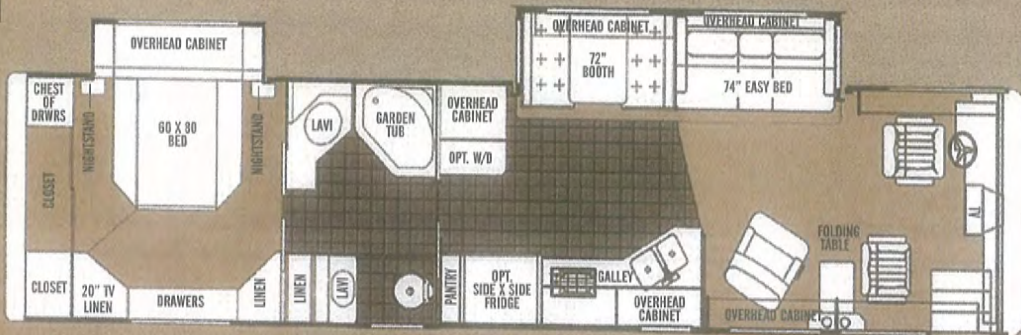
38 GH



40 GH

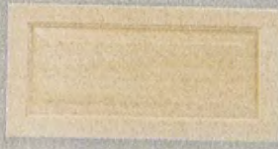


40 RH



FABRICS & CABINETS

Our fabric designs and wood choices will suit any taste.



Natural Maple



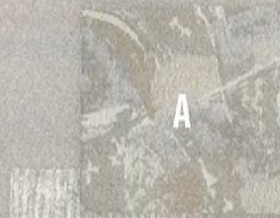
Oak



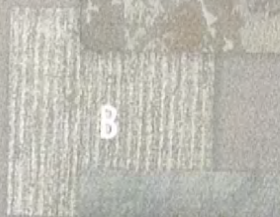
Walnut



Carpet



A

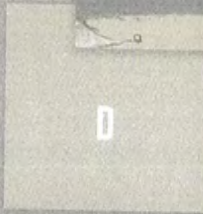


B

Dune



C



D

- A • Living Room/Sofa
- B • Swivel Chair
- C • Bedroom
- D • Valence Box & Legs

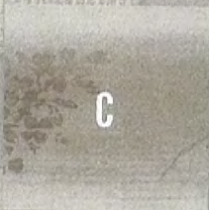


A

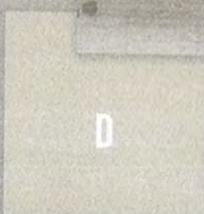


B

Soapstone



C



D

- A • Living Room
- B • Sofa/Chair
- C • Bedroom
- D • Valence Box & Legs



A

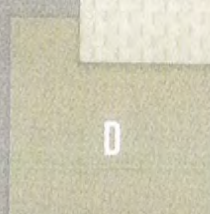


B

Wineberry



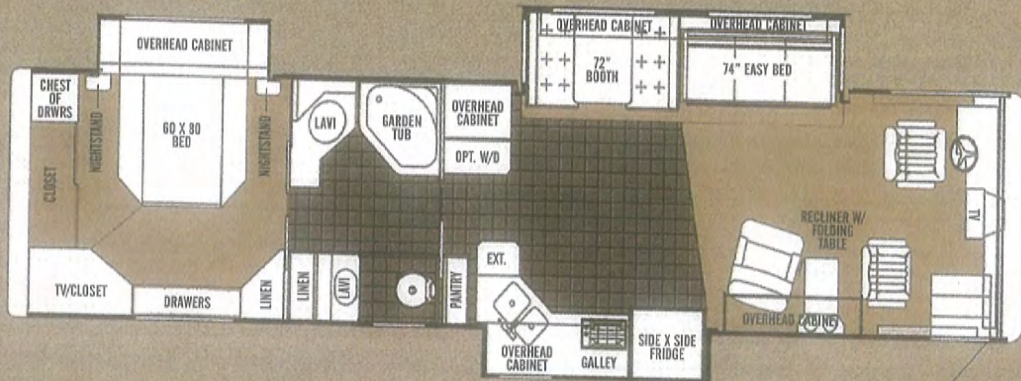
C



D

- A • Living Room
- B • Sofa/Chair
- C • Bedroom
- D • Valence Box & Legs

NOTE: While we try to represent the textiles accurately, color and hue shown here may vary from the original. See samples of these fabrics at your dealer for exact colors.



40 TGH

We were the first to offer a three slide unit and were pioneers in offering a full basement for storage. Currently, we are the only company with a double slide on a 30' unit.

PHAETON

TIFFIN MOTORHOMES, Inc.

105 2nd Street NW

Red Bay, Alabama 35582

(256) 356-8661

FAX: (256) 356-8219



We've been building motorhomes for over 30 years. In that time, we've earned a reputation for having the best motorhomes on the road. That's because of our quality products and the way we stand behind them. We view every owner of a Tiffin motorhome as more than a customer—we consider them part of our family. And every day we work to keep that relationship strong.

Our doors are always open to you and we're always here to take your calls. Or, if you prefer, visit our web site and let us know what we can do for you.

When you drive a Tiffin motorhome, you'll feel like one of the family. Because you are. Just ask someone who owns one.

Your friend,

Bob Tiffin



PHAETON



www.tiffinmotorhomes.com

Dealer: